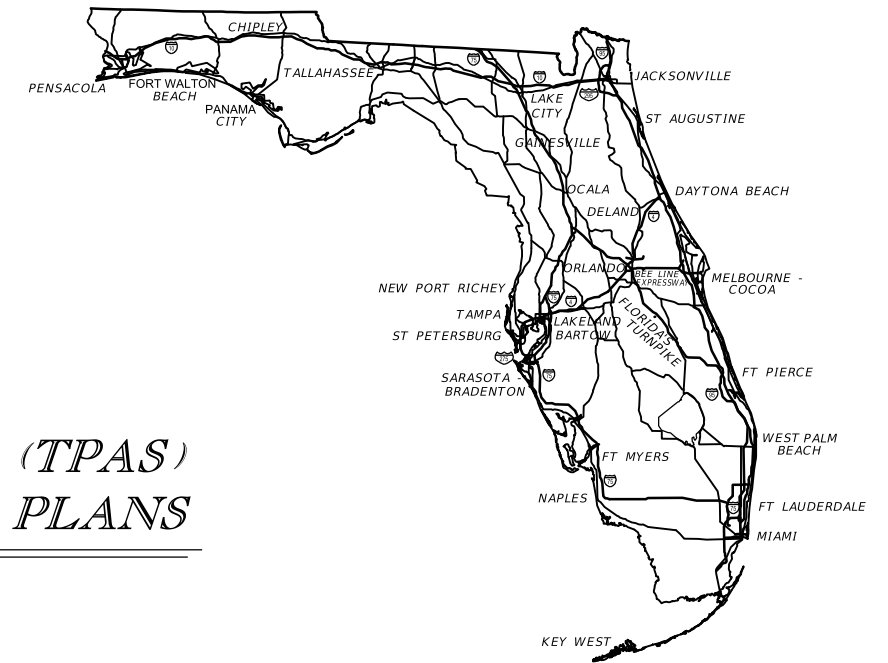


STATE OF FLORIDA
DEPARTMENT OF TRANSPORTATION

CONTRACT PLANS

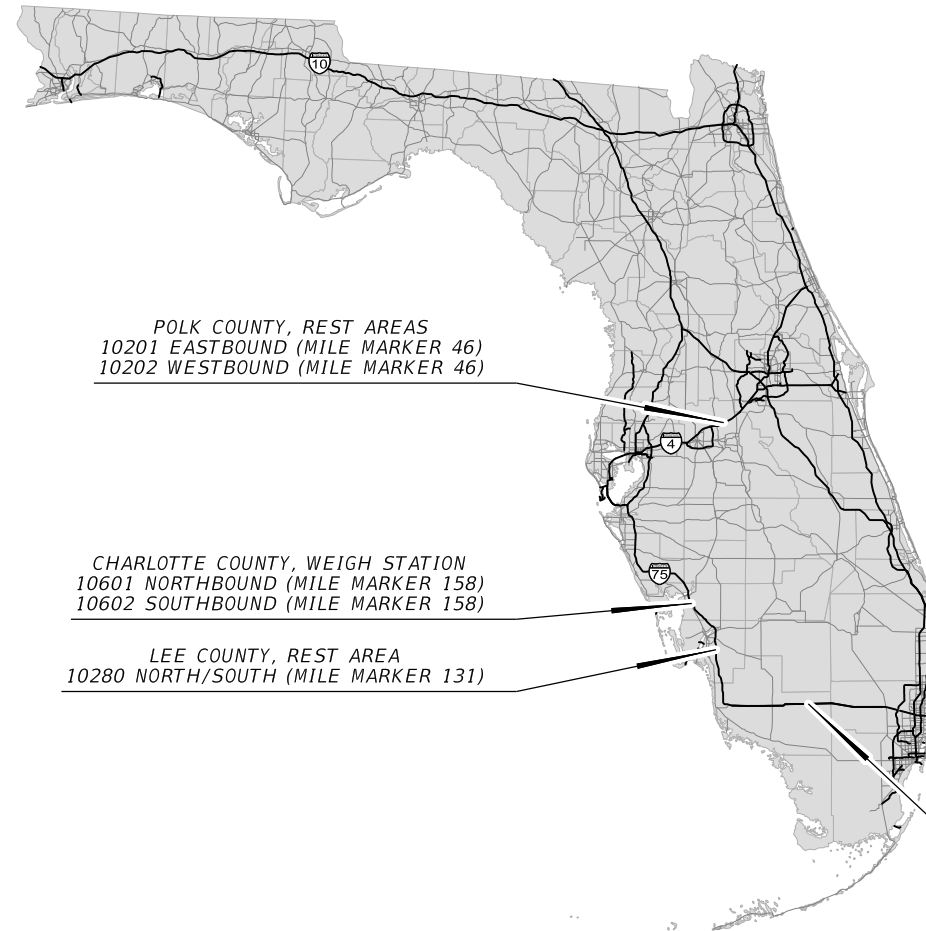
FINANCIAL PROJECT ID 440212-1-52-01
(FEDERAL FUNDS)



INDEX OF TPAS PLANS

SHEET NO.	SHEET DESCRIPTION
1	KEY SHEET
2	GENERAL NOTES
3	GUIDESIGN WORKSHEET
IT-01 TO IT-05B	ITS PLAN SHEETS

TRUCK PARKING AVAILABILITY SYSTEMS (TPAS)
INTELLIGENT TRANSPORTATION SYSTEM PLANS



ITS SHOP DRAWINGS
TO BE SUBMITTED TO:

50% PLANS PREPARED BY:

NOTE: THE SCALE OF THESE PLANS MAY
HAVE CHANGED DUE TO REPRODUCTION.

GOVERNING STANDARDS AND SPECIFICATIONS:

Florida Department of Transportation, 2016 Design Standards and revised Index Drawings as appended herein, and 2016 Standard Specifications for Road and Bridge Construction, as amended by Contract Documents.

For Design Standards click on the "Design Standards" link at the following web site:

<http://www.dot.state.fl.us/rddesign/DesignStandards>

For the Standard Specifications for Road and Bridge Construction click on the "Specifications" link at the following web site:

<http://www.dot.state.fl.us/specificationsoffice/StandardSpecifications>

KEY SHEET REVISIONS	
DATE	DESCRIPTION
FOR ILLUSTRATION PURPOSE ONLY	

TRUCK PARKING AVAILABILITY
SYSTEMS (TPAS) PLANS
ENGINEER OF RECORD: _____

P.E. NO.: _____

FISCAL YEAR	SHEET NO.
16	1

FDOT PROJECT MANAGER:

GENERAL NOTES

1. THE LOCATION(S) OF THE UTILITIES SHOWN IN THE PLANS ARE BASED ON LIMITED INVESTIGATION TECHNIQUES, AND MARK-UPS FROM UTILITY OWNERS. ALL UTILITIES SHOULD BE CONSIDERED APPROXIMATE ONLY.
2. THE CONTRACTOR SHALL NOTIFY UTILITY OWNERS LISTED THROUGH SUNSHINE STATE ONE CALL OF FLORIDA (811) TWO BUSINESS DAYS IN ADVANCE OF BEGINNING CONSTRUCTION ON THE JOB SITE.
3. FIBER OPTIC AND POWER PULL BOXES AND CONDUIT SHALL BE LOCATED WITHIN 100 FEET OF THE DEVICE THEY SUPPORT. ITS DEVICE LOCATIONS ARE APPROXIMATE AND MAY REQUIRE RELOCATION BY THE PROJECT ENGINEER. IF DEVICE RELOCATIONS OCCUR FOR ANY REASON, THE PULL BOXES AND CONDUIT SUPPORTING THAT DEVICE SHALL BE RELOCATED AND/OR EXTENDED.
4. INSTALL FIBER OPTIC CONDUIT FOR COMMUNICATION TO DEVICES AS SHOWN IN THE PLANS AND IN ACCORDANCE WITH ALL FDOT STANDARDS FOR CONDUIT INSTALLATION.
5. THE CONTRACTOR SHALL BE RESPONSIBLE FOR FURNISHING AND INSTALLING ABOVE GROUND TUBULAR ROUTE MARKERS PER SECTION 630 OF THE FDOT STANDARD SPECIFICATIONS. MARKERS SHALL BE PLACED AT A MAXIMUM OF 500 FEET AND AT EVERY PULL AND SPLICE BOX. A MARKER LABEL TEMPLATE SHALL BE PROVIDED FOR REVIEW.
6. THE CONDUIT SHALL BE SEALED WITH THE SPECIFIED DUCT PLUG AT THE TIME OF CONDUIT INSTALLATION AND AFTER FINAL FIBER INSTALLATION.
7. ELECTRICAL POWER SERVICE METERS SHALL HAVE A SEPARATE BREAKER FOR EACH ITS CIRCUIT.
8. THE CONTRACTOR SHALL HAND DIG (SOFT DIG) TO A DEPTH OF FOUR (4) FEET WHERE UTILITIES ARE IN CONFLICT PRIOR TO USE OF A MECHANICAL AUGER. ANY POTENTIAL CONFLICTS SHALL BE REPORTED TO THE PROJECT ENGINEER IMMEDIATELY.

UTILITY OWNERS

AT&T Distribution
Otis Keeve
954-723-2540

Century Link
Craig Clark
239-336-2003

City of Auburndale
John Dickson
863-965-5511

City of Punta Gorda
Steve Adams
941-575-3339

Comcast Cable
Mark Cook
215-286-1700

Duke Energy
Sharon Dear
407-905-3321

Fibernet Direct
Danny Haskett
305-552-2931

Florida Power & Light
Tracy Stern
386-329-5152

Frontier
David Reed
352-345-2348

Gulfstream Natural Gas
Fred DeLoach
941-723-7108

Lee County Electric Co-op
Tom Bailey
239-656-2414

Lee County Signal Department
Mike Padgett
239-533-9500

Lee County Irrigation
Richard M. Calkins Jr.
239-533-9400

Lee County Utilities
Terry Kelley
238-479-8181

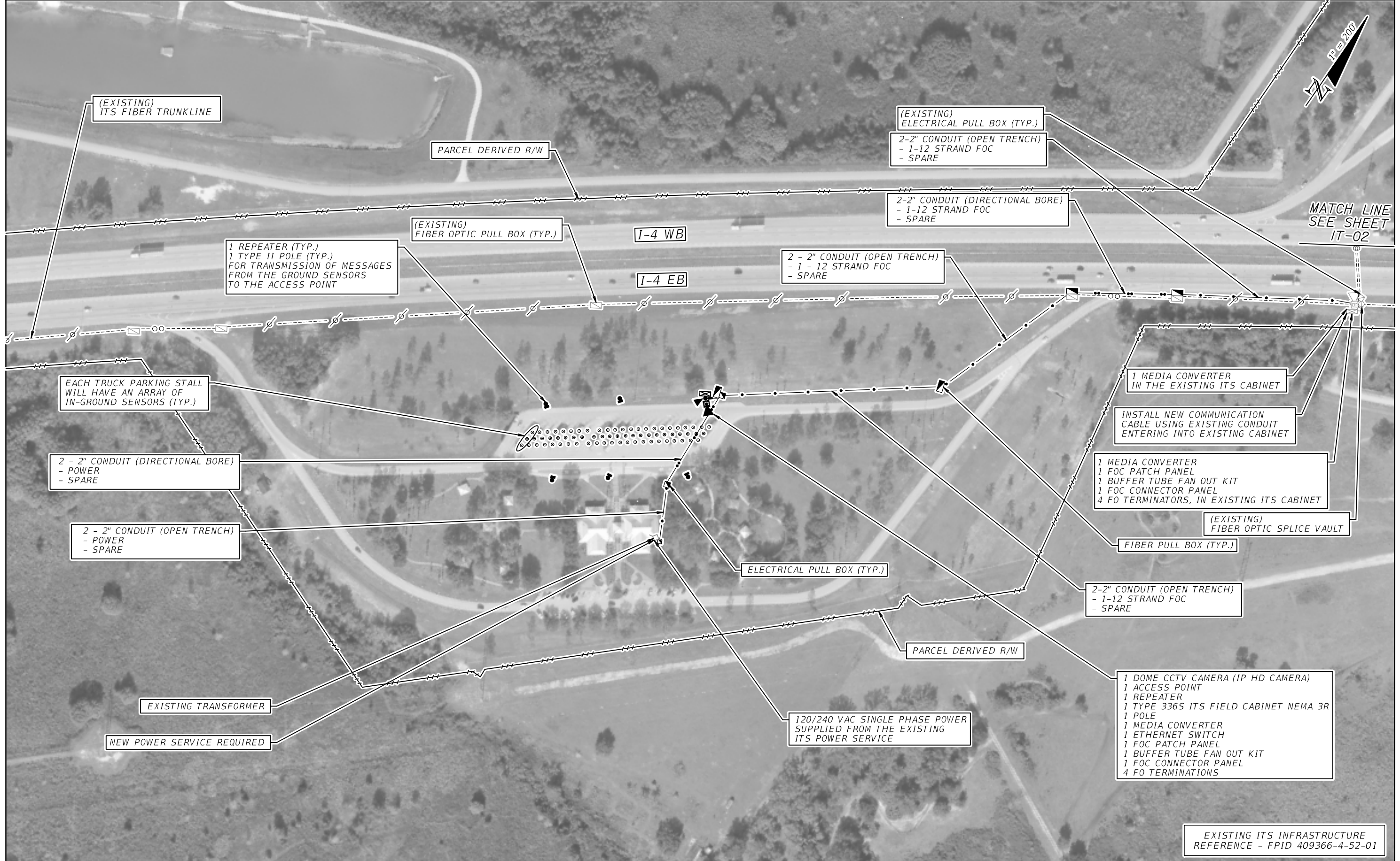
Manatee County Utilities
Keith McMahan
941-792-8811

TECO Peoples Gas
Marilyn Aloj
239-690-5517

LEGEND

EXISTING	PROPOSED	
		GROUND SENSORS
		REPEATER
		ACCESS POINT
		DETECTION ZONE
		CCTV WITH POLE
		MVDS
		MULTI-POST STATIC SIGN W/ ELECTRICAL DISPLAY SIGN
		BASE MOUNT CABINET
		POLE MOUNT CABINET
		PULL BOX
		FIBER OPTIC PULL BOX
		SPLICE VAULT
		POWER SERVICE
		POLE
		DMS
		CONDUIT, OPEN TRENCH
		CONDUIT, DIRECTIONAL BORE
		FIBER OPTIC RUN
		POWER RUN

REVISIONS				FOR ILLUSTRATION PURPOSE ONLY	STATE OF FLORIDA DEPARTMENT OF TRANSPORTATION			GENERAL NOTES	SHEET NO.
DATE	DESCRIPTION	DATE	DESCRIPTION		ROAD NO.	COUNTY	FINANCIAL PROJECT ID		2
					VARIES	VARIES	440212-1-52-01		



EXISTING ITS INFRASTRUCTURE
REFERENCE - FPID 409366-4-52-01

REVISIONS				STATE OF FLORIDA DEPARTMENT OF TRANSPORTATION			TRUCK PARKING AVAILABILITY SYSTEM POLK COUNTY, FDOT DISTRICT 1 REST AREA 10201 (23 SPACES) EASTBOUND MILE MARKER 46	SHEET NO. IT-01
DATE	DESCRIPTION	DATE	DESCRIPTION	ROAD NO.	COUNTY	FINANCIAL PROJECT ID		
				I-4	POLK	440212-1-52-01		

**FOR ILLUSTRATION
PURPOSE ONLY**



ELECTRICAL PULL BOX (TYP.)

3 - 2" CONDUIT (OPEN TRENCH)
- 1 -12 STRAND FOC
- POWER
- SPARE

2 - 2" CONDUIT (DIRECTIONAL BORE)
- POWER
- SPARE

120/240 VAC SINGLE PHASE POWER
SUPPLIED FROM THE EXISTING
ITS POWER SERVICE

(EXISTING)
ELECTRICAL PULL BOX (TYP.)

INTERCEPT EXISTING
FIBER PULL BOX

MATCH LINE
SEE SHEET
IT-01

1 MEDIA CONVERTER
1 FOC PATCH PANEL
1 BUFFER TUBE FAN OUT KIT
1 FOC CONNECTOR PANEL
4 FO TERMINATORS, IN EXISTING ITS CABINET

INSTALL NEW COMMUNICATION
CABLE USING EXISTING CONDUIT
ENTERING INTO EXISTING CABINET

(EXISTING)
FIBER OPTIC DROP CONDUIT

(EXISTING)
POWER CONDUIT WITH CONDUCTORS

PARCEL DERIVED R/W

1 REPEATER (TYP.)
1 TYPE II POLE (TYP.)
FOR TRANSMISSION OF MESSAGES
FROM THE GROUND SENSORS
TO THE ACCESS POINT

EACH TRUCK PARKING STALL
WILL HAVE AN ARRAY OF
IN-GROUND SENSORS (TYP.)

1 DOME CCTV CAMERA (IP HD CAMERA)
1 ACCESS POINT
1 REPEATER
1 TYPE 336S ITS FIELD CABINET NEMA 3R
1 POLE
1 MEDIA CONVERTER
1 ETHERNET SWITCH
1 FOC PATCH PANEL
1 BUFFER TUBE FAN OUT KIT
1 FOC CONNECTOR PANEL
4 FO TERMINATIONS

I-4 WB

I-4 EB

FIBER OPTIC PULL BOX (TYP.)

3 - 2" CONDUIT (OPEN TRENCH)
- 1-12 STRAND FOC
- POWER
- SPARE

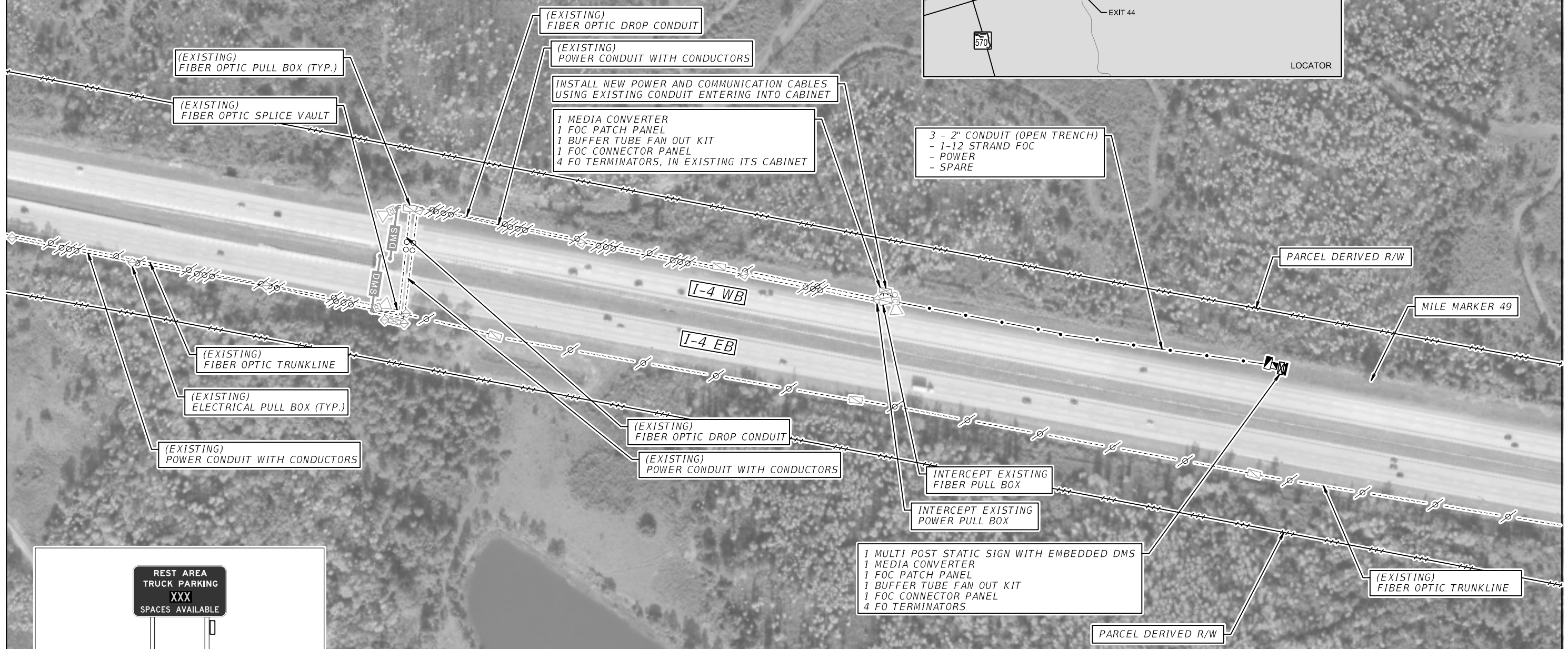
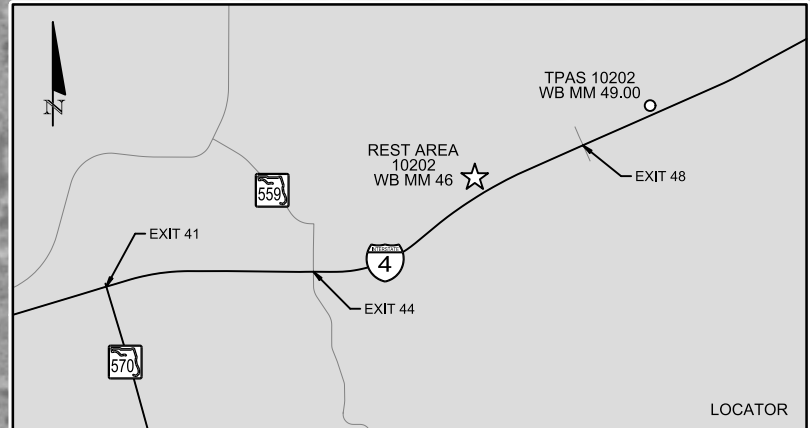
PARCEL DERIVED R/W

(EXISTING)
FIBER OPTIC PULL BOX (TYP.)

(EXISTING)
FIBER OPTIC TRUNKLINE

EXISTING ITS INFRASTRUCTURE REFERENCE
- FPID 409366-4-52-01

REVISIONS				FOR ILLUSTRATION PURPOSE ONLY	STATE OF FLORIDA DEPARTMENT OF TRANSPORTATION			TRUCK PARKING AVAILABILITY SYSTEM POLK COUNTY, FDOT DISTRICT 1 REST AREA 10202 (24 SPACES) WESTBOUND MILE MARKER 46	SHEET NO. IT-02
DATE	DESCRIPTION	DATE	DESCRIPTION		ROAD NO.	COUNTY	FINANCIAL PROJECT ID		
					I-4	POLK	440212-1-52-01		



REST AREA
TRUCK PARKING
XXX
SPACES AVAILABLE


TRUCK PARKING AVAILABILITY SIGN WITH 3-DIGIT EMBEDDED DMS AT WB MM 49.00 EAST OF REST AREA (MM 46) (ADJUST SIGN LOCATION PER MUTCD SIGN SPACING REQUIREMENTS)
- 3-DIGIT EMBEDDED DMS
- POWER FROM NEAREST ITS CABINET
- POLE MOUNTED NEMA CABINET
- COMMUNICATION FROM NEAREST ITS CABINET

EXISTING ITS INFRASTRUCTURE REFERENCE
- FPID 409366-4-52-01

REVISIONS		DESCRIPTION		STATE OF FLORIDA DEPARTMENT OF TRANSPORTATION			TRUCK PARKING AVAILABILITY SYSTEM POLK COUNTY, FDOT DISTRICT 1 TPAS SIGN 10202 WESTBOUND MILE MARKER 49.00	SHEET NO. IT-02A
DATE	DESCRIPTION	DATE	DESCRIPTION	ROAD NO.	COUNTY	FINANCIAL PROJECT ID		
			FOR ILLUSTRATION PURPOSE ONLY	I-4	POLK	440212-1-52-01		



REVISIONS		DESCRIPTION		STATE OF FLORIDA DEPARTMENT OF TRANSPORTATION			TRUCK PARKING AVAILABILITY SYSTEM COLLIER COUNTY, FDOT DISTRICT 1 REST AREA 10290 (27 SPACES) NORTH/SOUTH MILE MARKER 63	SHEET NO.
DATE	DESCRIPTION	DATE	DESCRIPTION	ROAD NO.	COUNTY	FINANCIAL PROJECT ID		IT-03
			FOR ILLUSTRATION PURPOSE ONLY	I-75	COLLIER	440212-1-52-01		




VMS 10290
SB MM 66.74

★
REST AREA
10290
NB/SB MM 63

75

LOCATOR

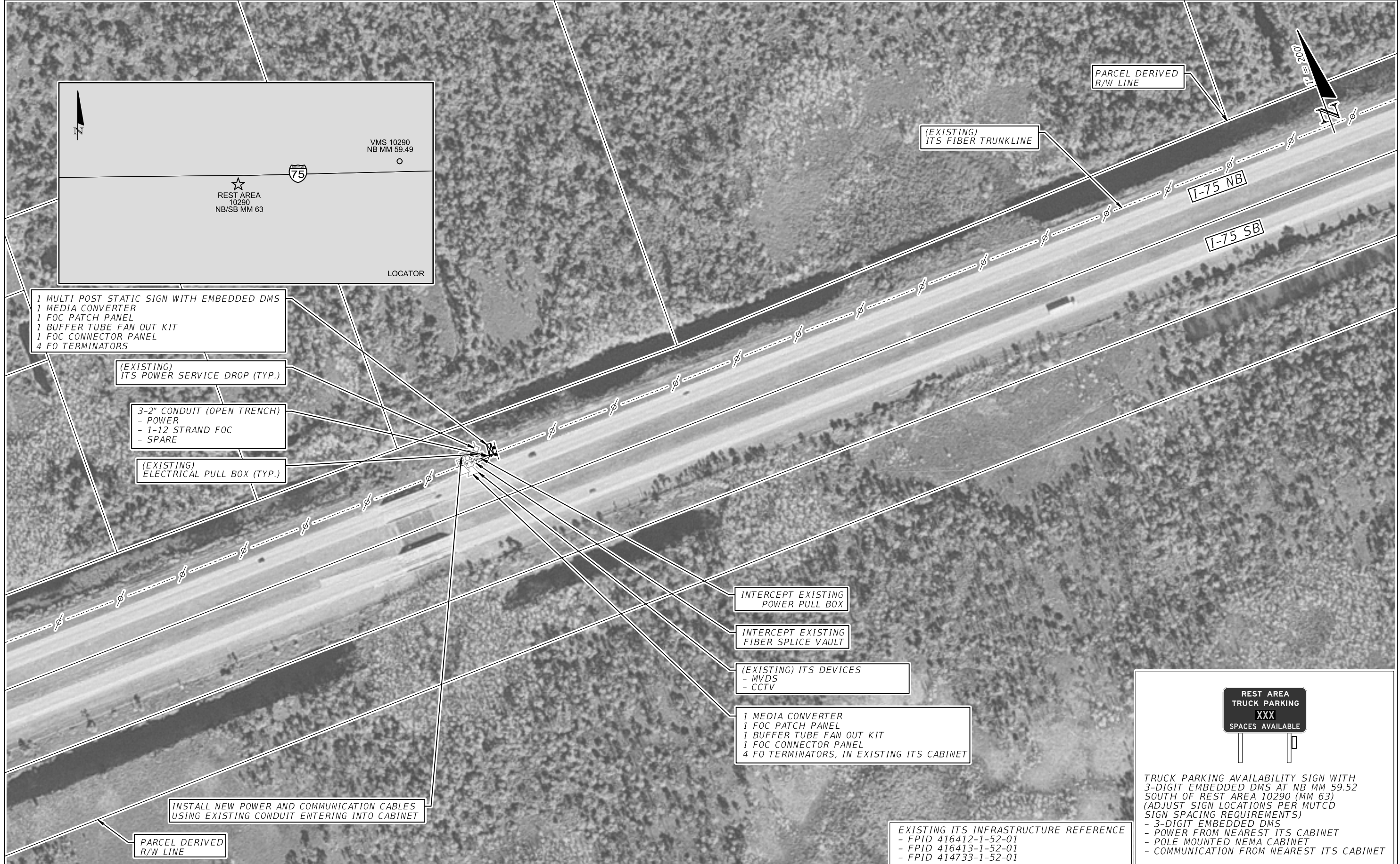
TRUCK PARKING AVAILABILITY SIGN WITH 3-DIGIT EMBEDDED DMS AT SB MM 66.74 NORTH OF REST AREA 10290 (MM 63) (ADJUST SIGN LOCATIONS PER MUTCD SIGN SPACING REQUIREMENTS)

- 3-DIGIT EMBEDDED DMS
- POWER FROM NEAREST ITS CABINET
- POLE MOUNTED NEMA CABINET
- COMMUNICATION FROM NEAREST ITS CABINET

EXISTING ITS INFRASTRUCTURE REFERENCE

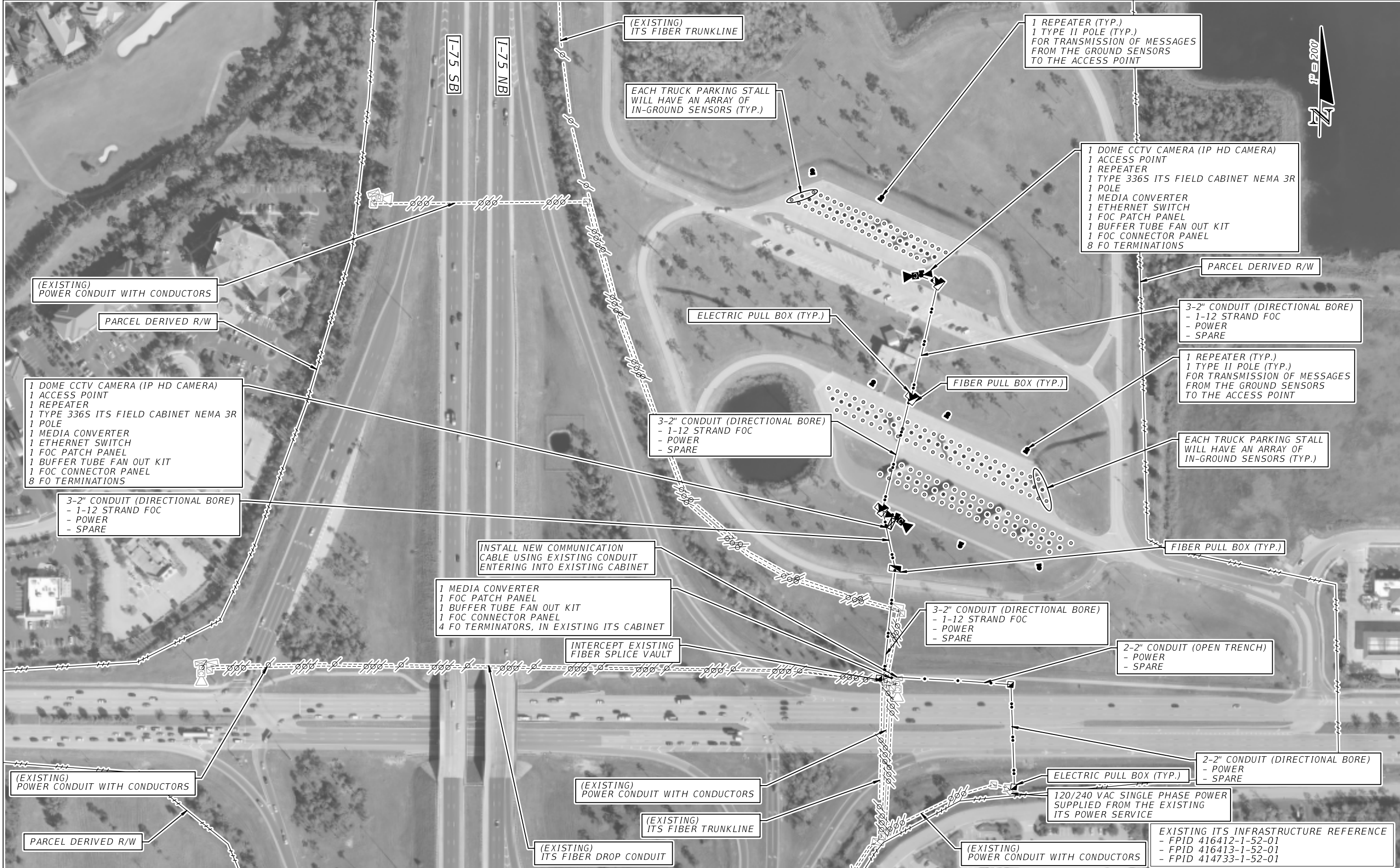
- FPID 416412-1-52-01
- FPID 416413-1-52-01
- FPID 414733-1-52-01

REVISIONS				STATE OF FLORIDA DEPARTMENT OF TRANSPORTATION			TRUCK PARKING AVAILABILITY SYSTEM COLLIER COUNTY, FDOT DISTRICT 1 TPAS SIGN 10290 SOUTHBOUND MILE MARKER 66.74	SHEET NO. IT-03A
DATE	DESCRIPTION	DATE	DESCRIPTION	ROAD NO.	COUNTY	FINANCIAL PROJECT ID		
			FOR ILLUSTRATION PURPOSE ONLY	I-75	COLLIER	440212-1-52-01		



REVISIONS				STATE OF FLORIDA DEPARTMENT OF TRANSPORTATION			TRUCK PARKING AVAILABILITY SYSTEM COLLIER COUNTY, FDOT DISTRICT 1 TPAS SIGN 10290 NORTHBOUND MILE MARKER 59.52		SHEET NO.
DATE	DESCRIPTION	DATE	DESCRIPTION	ROAD NO.	COUNTY	FINANCIAL PROJECT ID			
				I-75	COLLIER	440212-1-52-01			IT-03B

FOR ILLUSTRATION PURPOSE ONLY

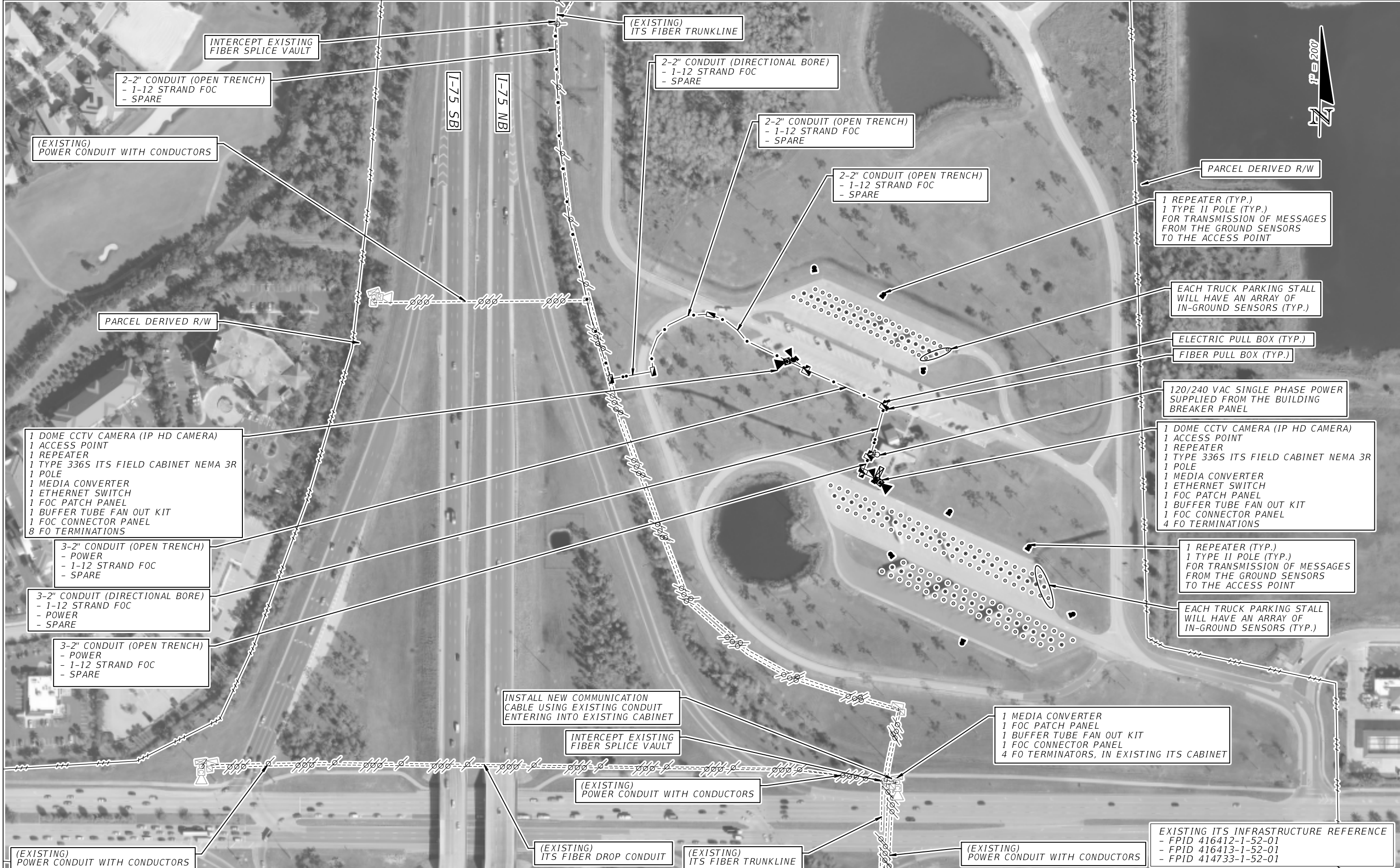


REVISIONS	
DATE	DESCRIPTION

FOR ILLUSTRATION
PURPOSE ONLY

STATE OF FLORIDA DEPARTMENT OF TRANSPORTATION		
ROAD NO.	COUNTY	FINANCIAL PROJECT ID
I-75	LEE	440212-1-52-01

TRUCK PARKING AVAILABILITY SYSTEM LEE COUNTY, FDOT DISTRICT 1 REST AREA 10280 (64 SPACES) NORTH/SOUTH MILE MARKER 131	SHEET NO. IT-04
--	---------------------------



INTERCEPT EXISTING FIBER SPLICE VAULT

2-2" CONDUIT (OPEN TRENCH)
- 1-12 STRAND FOC
- SPARE

(EXISTING) POWER CONDUIT WITH CONDUCTORS

I-75 SB

I-75 NB

(EXISTING) ITS FIBER TRUNKLINE

2-2" CONDUIT (DIRECTIONAL BORE)
- 1-12 STRAND FOC
- SPARE

2-2" CONDUIT (OPEN TRENCH)
- 1-12 STRAND FOC
- SPARE

2-2" CONDUIT (OPEN TRENCH)
- 1-12 STRAND FOC
- SPARE

PARCEL DERIVED R/W

1 REPEATER (TYP.)
1 TYPE II POLE (TYP.)
FOR TRANSMISSION OF MESSAGES FROM THE GROUND SENSORS TO THE ACCESS POINT

EACH TRUCK PARKING STALL WILL HAVE AN ARRAY OF IN-GROUND SENSORS (TYP.)

ELECTRIC PULL BOX (TYP.)
FIBER PULL BOX (TYP.)

120/240 VAC SINGLE PHASE POWER SUPPLIED FROM THE BUILDING BREAKER PANEL

1 DOME CCTV CAMERA (IP HD CAMERA)
1 ACCESS POINT
1 REPEATER
1 TYPE 336S ITS FIELD CABINET NEMA 3R
1 POLE
1 MEDIA CONVERTER
1 ETHERNET SWITCH
1 FOC PATCH PANEL
1 BUFFER TUBE FAN OUT KIT
1 FOC CONNECTOR PANEL
4 FO TERMINATIONS

1 REPEATER (TYP.)
1 TYPE II POLE (TYP.)
FOR TRANSMISSION OF MESSAGES FROM THE GROUND SENSORS TO THE ACCESS POINT

EACH TRUCK PARKING STALL WILL HAVE AN ARRAY OF IN-GROUND SENSORS (TYP.)

PARCEL DERIVED R/W

1 DOME CCTV CAMERA (IP HD CAMERA)
1 ACCESS POINT
1 REPEATER
1 TYPE 336S ITS FIELD CABINET NEMA 3R
1 POLE
1 MEDIA CONVERTER
1 ETHERNET SWITCH
1 FOC PATCH PANEL
1 BUFFER TUBE FAN OUT KIT
1 FOC CONNECTOR PANEL
8 FO TERMINATIONS

3-2" CONDUIT (OPEN TRENCH)
- POWER
- 1-12 STRAND FOC
- SPARE

3-2" CONDUIT (DIRECTIONAL BORE)
- 1-12 STRAND FOC
- POWER
- SPARE

3-2" CONDUIT (OPEN TRENCH)
- POWER
- 1-12 STRAND FOC
- SPARE

INSTALL NEW COMMUNICATION CABLE USING EXISTING CONDUIT ENTERING INTO EXISTING CABINET

INTERCEPT EXISTING FIBER SPLICE VAULT

(EXISTING) POWER CONDUIT WITH CONDUCTORS

1 MEDIA CONVERTER
1 FOC PATCH PANEL
1 BUFFER TUBE FAN OUT KIT
1 FOC CONNECTOR PANEL
4 FO TERMINATORS, IN EXISTING ITS CABINET

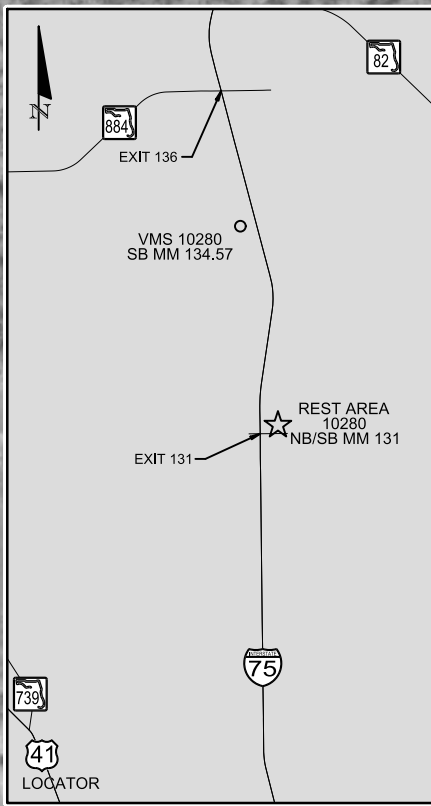
(EXISTING) ITS FIBER DROP CONDUIT

(EXISTING) ITS FIBER TRUNKLINE

(EXISTING) POWER CONDUIT WITH CONDUCTORS

EXISTING ITS INFRASTRUCTURE REFERENCE
- FPID 416412-1-52-01
- FPID 416413-1-52-01
- FPID 414733-1-52-01

REVISIONS		DESCRIPTION		STATE OF FLORIDA DEPARTMENT OF TRANSPORTATION			TRUCK PARKING AVAILABILITY SYSTEM LEE COUNTY, FDOT DISTRICT 1 REST AREA 10280 (64 SPACES) NORTH/SOUTH MILE MARKER 131	SHEET NO. IT-04
DATE	DESCRIPTION	DATE	DESCRIPTION	ROAD NO.	COUNTY	FINANCIAL PROJECT ID		
	OPTION 2		FOR ILLUSTRATION PURPOSE ONLY	I-75	LEE	440212-1-52-01		



TRUCK PARKING AVAILABILITY SIGN WITH 3-DIGIT EMBEDDED DMS AT SB MM 134.57 NORTH OF REST AREA 10280 (MM 131) (ADJUST SIGN LOCATIONS PER MUTCD SIGN SPACING REQUIREMENTS)

- 3-DIGIT EMBEDDED DMS
- POWER FROM NEAREST ITS CABINET
- POLE MOUNTED NEMA CABINET
- COMMUNICATION FROM NEAREST ITS CABINET

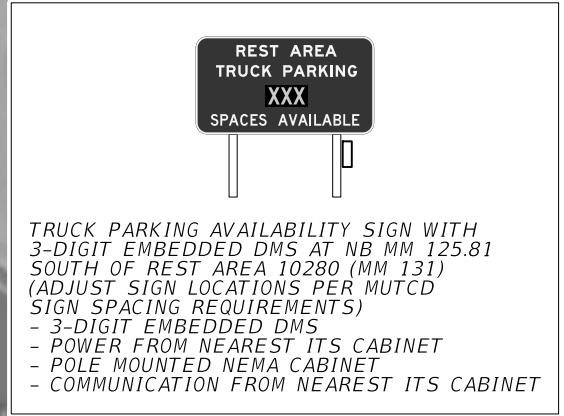
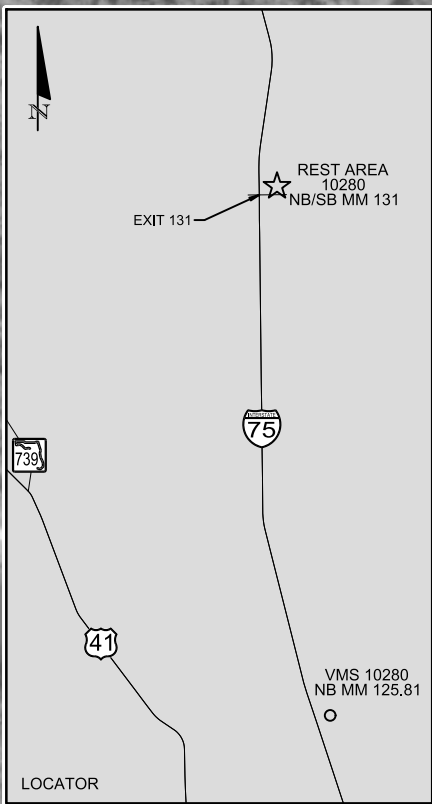
REVISIONS	
DATE	DESCRIPTION

FOR ILLUSTRATION PURPOSE ONLY

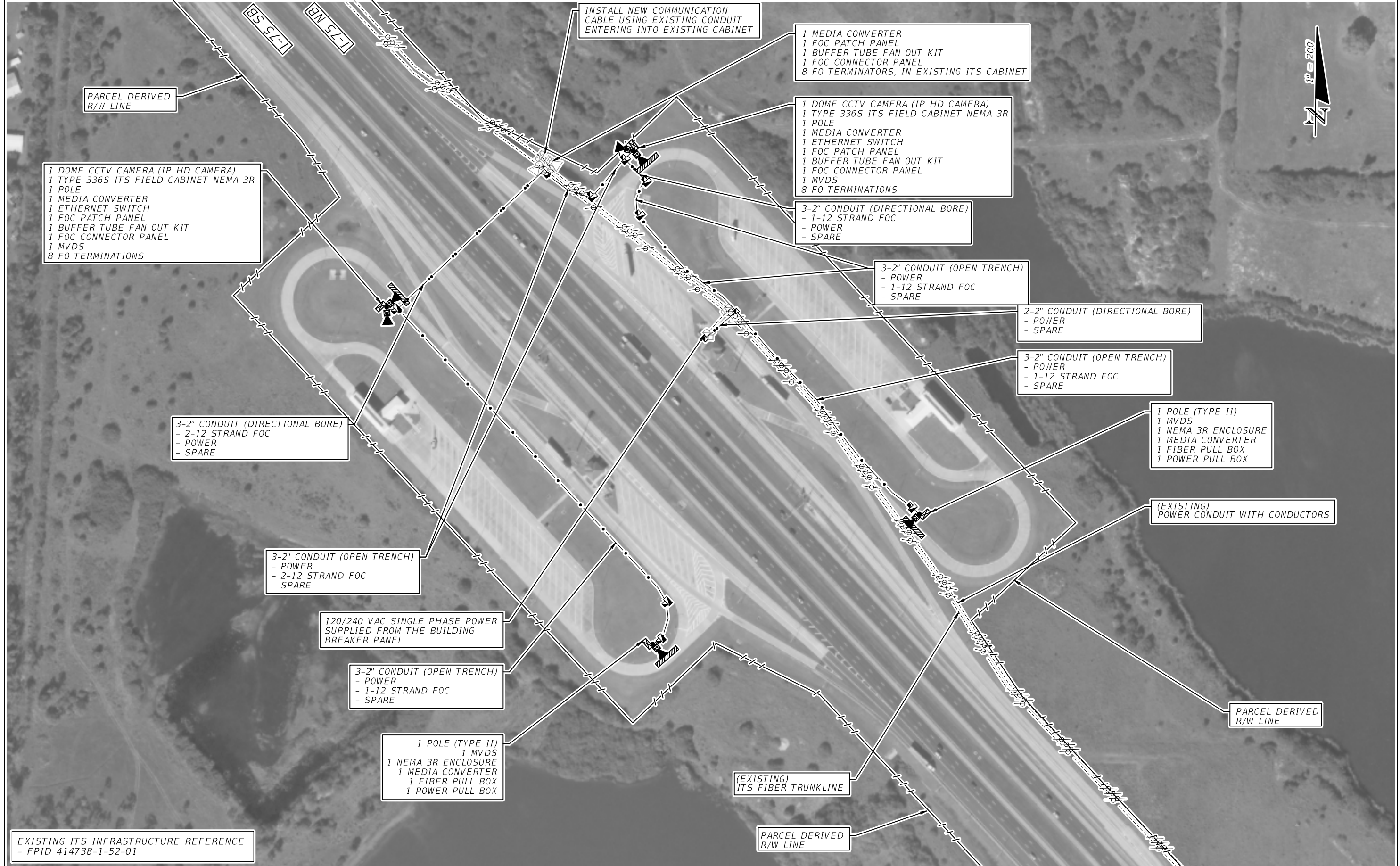
STATE OF FLORIDA DEPARTMENT OF TRANSPORTATION		
ROAD NO.	COUNTY	FINANCIAL PROJECT ID
I-75	LEE	440212-1-52-01

TRUCK PARKING AVAILABILITY SYSTEM
LEE COUNTY, FDOT DISTRICT 1
TPAS SIGN 10280
SOUTHBOUND MILE MARKER 134.57

SHEET NO.
IT-04A



REVISIONS		DESCRIPTION	STATE OF FLORIDA DEPARTMENT OF TRANSPORTATION			TRUCK PARKING AVAILABILITY SYSTEM LEE COUNTY, FDOT DISTRICT 1 TPAS SIGN 10280 NORTHBOUND MILE MARKER 125.81	SHEET NO. IT-04B
DATE	DESCRIPTION		ROAD NO.	COUNTY	FINANCIAL PROJECT ID		
		FOR ILLUSTRATION PURPOSE ONLY	I-75	LEE	440212-1-52-01		



DATE		DESCRIPTION		DATE		DESCRIPTION	
FOR ILLUSTRATION PURPOSE ONLY							
STATE OF FLORIDA DEPARTMENT OF TRANSPORTATION							
ROAD NO.		COUNTY		FINANCIAL PROJECT ID			
I-75		CHARLOTTE		440212-1-52-01			
TRUCK PARKING AVAILABILITY SYSTEM CHARLOTTE COUNTY, FDOT DISTRICT 1 WEIGH STATION 10601 (23 SPACES) NORTHBOUND MILE MARKER 158 WEIGH STATION 10602 (23 SPACES) SOUTHBOUND MILE MARKER 158							SHEET NO. IT-05

PARCEL DERIVED R/W LINE

(EXISTING) ELECTRICAL PULL BOX (TYP.)

(EXISTING) ITS FIBER TRUNKLINE

(EXISTING) POWER CONDUIT WITH CONDUCTORS



1 MULTI POST STATIC SIGN WITH EMBEDDED DMS
 1 MEDIA CONVERTER
 1 FOC PATCH PANEL
 1 BUFFER TUBE FAN OUT KIT
 1 FOC CONNECTOR PANEL
 4 FO TERMINATORS

3-2" CONDUIT (OPEN TRENCH)
 - POWER
 - 1-12 STRAND FOC
 - SPARE

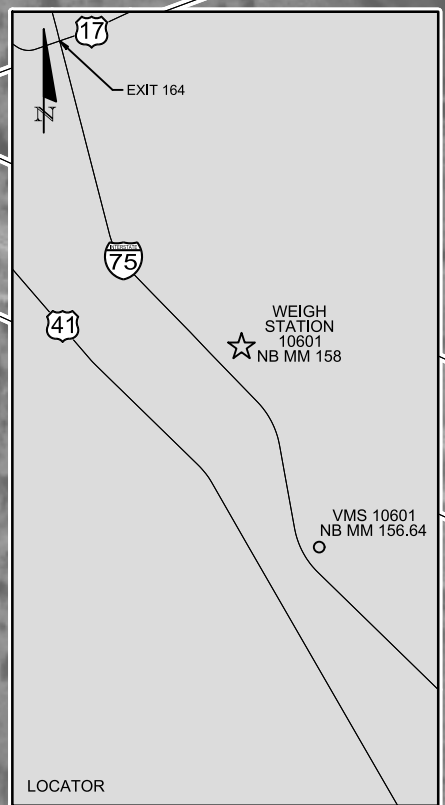
1 MEDIA CONVERTER
 1 FOC PATCH PANEL
 1 BUFFER TUBE FAN OUT KIT
 1 FOC CONNECTOR PANEL
 4 FO TERMINATORS, IN EXISTING ITS CABINET

INSTALL NEW POWER AND COMMUNICATION CABLES USING EXISTING CONDUIT ENTERING INTO CABINET

INTERCEPT EXISTING FIBER SPLICE VAULT

(EXISTING) ITS FIBER DROP CONDUIT

PARCEL DERIVED R/W LINE



I-75 NB

I-75 SB

INTERCEPT EXISTING POWER PULL BOX

(EXISTING) FIBER OPTIC SPLICE BOX (TYP.)

(EXISTING) FIBER OPTIC PULL BOX (TYP.)

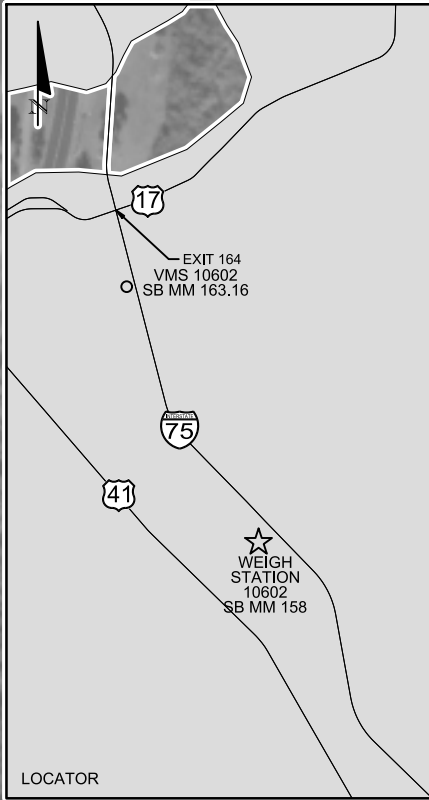
REST AREA
 TRUCK PARKING
 XXX
 SPACES AVAILABLE

TRUCK PARKING AVAILABILITY SIGN WITH 3-DIGIT EMBEDDED DMS AT NB MM 156.64 SOUTH OF WEIGH STATION 10601 (MM 158) (ADJUST SIGN LOCATIONS PER MUTCD SIGN SPACING REQUIREMENTS)
 - 3-DIGIT EMBEDDED DMS
 - POWER FROM NEAREST ITS CABINET
 - POLE MOUNTED NEMA CABINET
 - COMMUNICATION FROM NEAREST ITS CABINET

EXISTING ITS INFRASTRUCTURE REFERENCE - FPID 414738-1-52-01

REVISIONS				STATE OF FLORIDA DEPARTMENT OF TRANSPORTATION			TRUCK PARKING AVAILABILITY SYSTEM CHARLOTTE COUNTY, FDOT DISTRICT 1 TPAS SIGN 10601 NORTHBOUND MILE MARKER 156.64	SHEET NO. IT-05A
DATE	DESCRIPTION	DATE	DESCRIPTION	ROAD NO.	COUNTY	FINANCIAL PROJECT ID		
				I-75	CHARLOTTE	440212-1-52-01		

FOR ILLUSTRATION PURPOSE ONLY



**REST AREA
TRUCK PARKING
XXX
SPACES AVAILABLE**

TRUCK PARKING AVAILABILITY SIGN WITH 3-DIGIT EMBEDDED DMS AT SB MM 163.16 NORTH OF WEIGH STATION 10602 (MM 158) (ADJUST SIGN LOCATIONS PER MUTCD SIGN SPACING REQUIREMENTS)
 - 3-DIGIT EMBEDDED DMS
 - POWER FROM NEAREST ITS CABINET
 - POLE MOUNTED NEMA CABINET
 - COMMUNICATION FROM NEAREST ITS CABINET

DATE		DESCRIPTION		DATE		DESCRIPTION	
FOR ILLUSTRATION PURPOSE ONLY							
				STATE OF FLORIDA DEPARTMENT OF TRANSPORTATION		TRUCK PARKING AVAILABILITY SYSTEM CHARLOTTE COUNTY, FDOT DISTRICT 1 TPAS SIGN 10602 SOUTHBOUND MILE MARKER 163.16	
				ROAD NO.	COUNTY	FINANCIAL PROJECT ID	
				I-75	CHARLOTTE	440212-1-52-01	
				SHEET NO.		IT-05B	