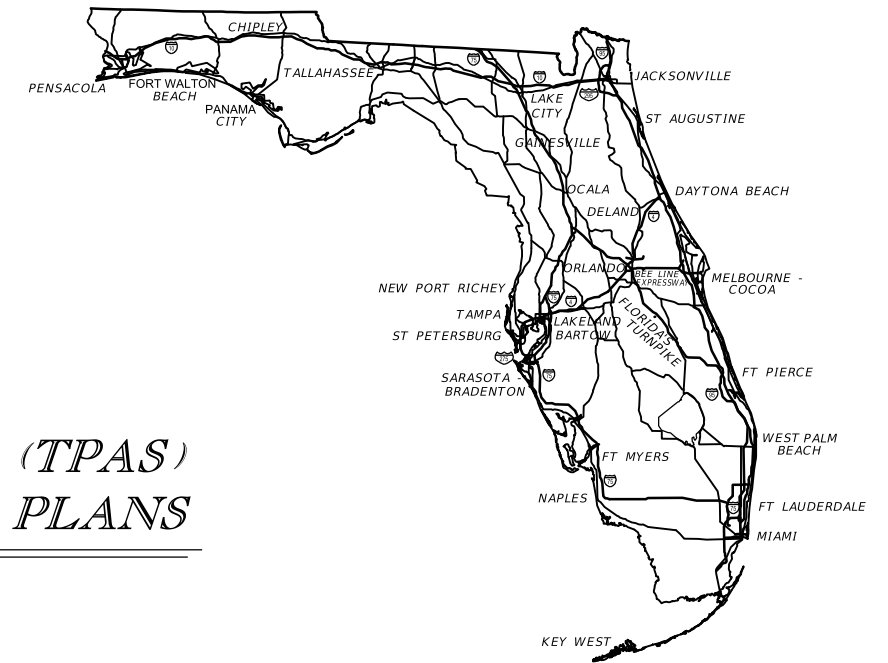


STATE OF FLORIDA  
DEPARTMENT OF TRANSPORTATION

CONTRACT PLANS

FINANCIAL PROJECT ID 438096-1-52-01  
(FEDERAL FUNDS)



INDEX OF TPAS PLANS

SHEET NO.	SHEET DESCRIPTION
1	KEY SHEET
2	GENERAL NOTES
3	GUIDESIGN WORKSHEET
IT-01 TO IT-06A	ITS PLAN SHEETS

TRUCK PARKING AVAILABILITY SYSTEMS (TPAS)  
INTELLIGENT TRANSPORTATION SYSTEM PLANS



SEMINOLE COUNTY, REST AREAS  
50221 EASTBOUND (MILE MARKER 96)

FLAGLER COUNTY, WEIGH STATIONS  
50671 NORTHBOUND (MILE MARKER 286)  
50672 SOUTHBOUND (MILE MARKER 286)

BREVARD COUNTY, REST AREAS  
50341 NORTHBOUND (MILE MARKER 225)  
50342 SOUTHBOUND (MILE MARKER 227)

BREVARD COUNTY, REST AREAS  
50381 NORTHBOUND (MILE MARKER 168)  
50382 SOUTHBOUND (MILE MARKER 169)

GOVERNING STANDARDS AND SPECIFICATIONS:  
Florida Department of Transportation, 2016 Design Standards and revised Index Drawings as appended herein, and 2016 Standard Specifications for Road and Bridge Construction, as amended by Contract Documents.

For Design Standards click on the "Design Standards" link at the following web site:  
<http://www.dot.state.fl.us/rddesign/DesignStandards>

For the Standard Specifications for Road and Bridge Construction click on the "Specifications" link at the following web site:  
<http://www.dot.state.fl.us/specificationsoffice/StandardSpecifications>

NOTE: THE SCALE OF THESE PLANS MAY HAVE CHANGED DUE TO REPRODUCTION.

KEY SHEET REVISIONS	
DATE	DESCRIPTION

FISCAL YEAR	SHEET NO.
15	1

GENERAL NOTES

1. THE LOCATION(S) OF THE UTILITIES SHOWN IN THE PLANS ARE BASED ON LIMITED INVESTIGATION TECHNIQUES, AND MARK-UPS FROM UTILITY OWNERS. ALL UTILITIES SHOULD BE CONSIDERED APPROXIMATE ONLY.
2. THE CONTRACTOR SHALL NOTIFY UTILITY OWNERS LISTED THROUGH SUNSHINE STATE ONE CALL OF FLORIDA (811) TWO BUSINESS DAYS IN ADVANCE OF BEGINNING CONSTRUCTION ON THE JOB SITE.
3. FIBER OPTIC AND POWER PULL BOXES AND CONDUIT SHALL BE LOCATED WITHIN 100 FEET OF THE DEVICE THEY SUPPORT. ITS DEVICE LOCATIONS ARE APPROXIMATE AND MAY REQUIRE RELOCATION BY THE PROJECT ENGINEER. IF DEVICE RELOCATIONS OCCUR FOR ANY REASON, THE PULL BOXES AND CONDUIT SUPPORTING THAT DEVICE SHALL BE RELOCATED AND/OR EXTENDED.
4. INSTALL FIBER OPTIC CONDUIT FOR COMMUNICATION TO DEVICES AS SHOWN IN THE PLANS AND IN ACCORDANCE WITH ALL FDOT STANDARDS FOR CONDUIT INSTALLATION.
5. THE CONTRACTOR SHALL BE RESPONSIBLE FOR FURNISHING AND INSTALLING ABOVE GROUND TUBULAR ROUTE MARKERS PER SECTION 630 OF THE FDOT STANDARD SPECIFICATIONS. MARKERS SHALL BE PLACED AT A MAXIMUM OF 500 FEET AND AT EVERY PULL AND SPLICE BOX. A MARKER LABEL TEMPLATE SHALL BE PROVIDED FOR REVIEW.
6. THE CONDUIT SHALL BE SEALED WITH THE SPECIFIED DUCT PLUG AT THE TIME OF CONDUIT INSTALLATION AND AFTER FINAL FIBER INSTALLATION.
7. ELECTRICAL POWER SERVICE METERS SHALL HAVE A SEPARATE BREAKER FOR EACH ITS CIRCUIT.
8. THE CONTRACTOR SHALL HAND DIG (SOFT DIG) TO A DEPTH OF FOUR (4) FEET WHERE UTILITIES ARE IN CONFLICT PRIOR TO USE OF A MECHANICAL AUGER. ANY POTENTIAL CONFLICTS SHALL BE REPORTED TO THE PROJECT ENGINEER IMMEDIATELY.

LEGEND

EXISTING	PROPOSED	
		GROUND SENSORS
		REPEATER
		ACCESS POINT
		DETECTION ZONE
		CCTV WITH POLE
		MVDS
		MULTI-POST STATIC SIGN WITH EMBEDDED DMS
		BASE MOUNT CABINET
		POLE MOUNT CABINET
		PULL BOX
		FIBER OPTIC PULL BOX
		SPLICE VAULT
		POWER SERVICE
		POLE
		DMS
		CONDUIT, OPEN TRENCH
		CONDUIT, DIRECTIONAL BORE
		FIBER OPTIC RUN
		POWER RUN

UTILITY OWNERS

AT&T Distribution  
DINO FARRUGGIO  
561-997-0240  
df@att.com

AT&T  
GREG JACOBSON  
813-342-0512  
gj1529@att.com

BREVARD COUNTY  
ROY HAWTHORNE  
roy.hawthorne@brevardcounty.us

BRIGHT HOUSE  
MARVIN USRY JR  
407-532-8509  
marvin.usry@mybriighthouse.com

CENTURY LINK  
MARLON BROWN  
407-830-3359  
marlon.n.brown@centurylink.com

CITY OF ALTAMONTE SPRINGS  
FRANKLIN CABRERA  
407-571-8044  
frcabrera@altamonte.org

CITY OF LAKE MARY  
TOM CONNELLY/Daniel Koury  
407-585-1412  
dkoury@lakemaryfl.com

CITY OF PALM BAY UTILITIES  
EMANUEL ODIAS  
321-952-3410 X7010  
emanuel.odes@palmabayflorida.org

CITY OF PALM COAST UTILITY DEPT  
CHRIS JOHNSON  
386-986-2354  
cjohnson@palmcoastgov.com

COMCAST CABLE COMMUNICATIONS INC  
LIAM MCKENNA  
904-380-7574  
liam\_mckenna@cable.comcast.com

DUKE ENERGY  
SHARON DEAR  
407-905-3321  
sharon.dear@duke-energy.com

FL GAS TRANS MELBOURNE  
JOSEPH SANCHEZ  
321-243-4073  
joseph.e.sanchez@energytransfer.com

FLORIDA GAS TRANSMISSION - FT PIERCE  
JOSEPH SANCHEZ  
2405 LUCIEN WAY SUITE 200 MAITLAND, FL 32751  
407-838-7171  
joseph.e.sanchez@energytransfer.com

FLORIDA POWER & LIGHT - ST JOHNS/NASSAU  
/MARTIN/ST LUCIE/BREVARD/FLAGLER  
TRACY STERN  
386-329-5152  
tracy.stern@fpl.com

FPL FIBERNET  
DANNY HASKETT  
9250 W. FLAGLER STREET, FN/GO MIAMI, FL 33174  
786-246-7827  
305-552-2931  
danny.haskett@fpl.com

SEMINOLE COUNTY  
KYLE BECHTELHEIMER  
407-665-2021  
kbechtelheimer@seminolecountyfl.gov

TRANSCORE  
TUSHAR PATEL  
386-943-5315  
tushar.patel@dot.state.fl.us

FDOT District 5  
SCOTT KIRTS  
2400 Camp Road M.S. 593 Oviedo, FL 32765  
407-249-4275  
scott.kirts@dot.state.fl.us

AL NEUMANN  
386-740-3466

UTILITY OWNERS (CONTINUED)

HOTWIRE COMMUNICATION  
WALTER SANCHO-DAVILA  
954-248-7396  
walter.sancho-davila@hotwirecommunication.com

QWEST  
GEORGE MCELVAIN  
1801 CALIFORNIA STREET,  
FL 26 DENVER, CO 80202-2642  
800-283-4237  
george.mcelvain@qwest.com

SANLANDO UTILITY INC  
800-272-1919  
sawatler@uiwater.com

REVISIONS

DATE	DESCRIPTION	DATE	DESCRIPTION

STATE OF FLORIDA DEPARTMENT OF TRANSPORTATION		
ROAD NO.	COUNTY	FINANCIAL PROJECT ID
VARIES	VARIES	438096-1-52-01

*GENERAL NOTES*

SHEET NO.

2

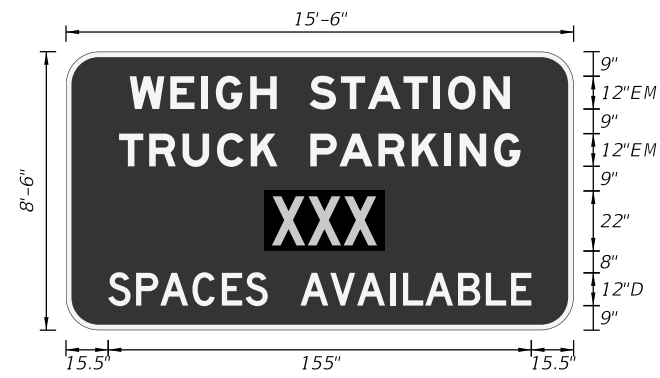
SIGN NAME	REST	QTY	SIGN NUMBER	STATION(S)	
PANEL	BORDER			none	
WIDTH	15'-6"	WIDTH	2"		
HEIGHT	8'-6"	RADII	12"		
LEGEND	White	COLOR	White		
COLOR	Blue				
SYMBOL(S)	ANGLE	X	Y	WID	HT
DMS	0	72.7	29	44	22
SIGN NUMBER	NUMBER OF POSTS	CLEARANCE Edge Of Lane	COLUMN SIZE	AVERAGE LENGTH	



NO. OF LIGHT FIXTURES	FIXTURE SPACING	PHOTOMETRIC CURVE	WATT	VOLTAGE
-----------------------	-----------------	-------------------	------	---------

COPY		R	E	S	T	A	R	E	A	L										
SPACE	40.7	12.2	11	11.5	8.9	12	14.3	12.2	10.2	12.1	40.7	104.5								
COPY		T	R	U	C	K	P	A	R	K	I	N	G	L						
SPACE	19.4	11	12.2	12.6	12.4	9.8	12	10.7	14.3	12.2	11.8	5.8	12.6	9.7	19.4	147.1				
COPY		S	P	A	C	E	S	A	V	A	I	L	A	B	L	E	L			
SPACE	15.5	10.2	8.9	11.8	10.8	8.6	8.2	12	10.9	9.8	12	4.8	8.2	12	10.2	9.2	7.4	15.5	155	
COPY																				
SPACE																				
COPY																				
SPACE																				

SIGN NAME	WEIGH	QTY	SIGN NUMBER	STATION(S)	
PANEL	BORDER			none	
WIDTH	15'-6"	WIDTH	2"		
HEIGHT	8'-6"	RADII	12"		
LEGEND	White	COLOR	White		
COLOR	Blue				
SYMBOL(S)	ANGLE	X	Y	WID	HT
DMS	0	72.7	29	44	22
SIGN NUMBER	NUMBER OF POSTS	CLEARANCE Edge Of Lane	COLUMN SIZE	AVERAGE LENGTH	



NO. OF LIGHT FIXTURES	FIXTURE SPACING	PHOTOMETRIC CURVE	WATT	VOLTAGE
-----------------------	-----------------	-------------------	------	---------

COPY		W	E	I	G	H	S	T	A	T	I	O	N	L						
SPACE	23.3	14.9	11.4	5.3	12.6	9.7	12	11.5	9.8	13.1	11	5.3	13	9.7	23.3	139.3				
COPY		T	R	U	C	K	P	A	R	K	I	N	G	L						
SPACE	19.4	11	12.2	12.6	12.4	9.8	12	10.7	14.3	12.2	11.8	5.8	12.6	9.7	19.4	147.1				
COPY		S	P	A	C	E	S	A	V	A	I	L	A	B	L	E	L			
SPACE	15.5	10.2	8.9	11.8	10.8	8.6	8.2	12	10.9	9.8	12	4.8	8.2	12	10.2	9.2	7.4	15.5	155	
COPY																				
SPACE																				
COPY																				
SPACE																				

SIGN NAME		QTY	SIGN NUMBER	STATION(S)	
PANEL	BORDER				
WIDTH	WIDTH				
HEIGHT	RADII				
LEGEND	COLOR				
COLOR					
SYMBOL(S)	ANGLE	X	Y	WID	HT
SIGN NUMBER	NUMBER OF POSTS	CLEARANCE Edge Of Lane	COLUMN SIZE	AVERAGE LENGTH	

NO. OF LIGHT FIXTURES	FIXTURE SPACING	PHOTOMETRIC CURVE	WATT	VOLTAGE
-----------------------	-----------------	-------------------	------	---------

COPY																			
SPACE																			
COPY																			
SPACE																			
COPY																			
SPACE																			
COPY																			
SPACE																			
COPY																			
SPACE																			

SIGN NAME		QTY	SIGN NUMBER	STATION(S)	
PANEL	BORDER				
WIDTH	WIDTH				
HEIGHT	RADII				
LEGEND	COLOR				
COLOR					
SYMBOL(S)	ANGLE	X	Y	WID	HT
SIGN NUMBER	NUMBER OF POSTS	CLEARANCE Edge Of Lane	COLUMN SIZE	AVERAGE LENGTH	

NO. OF LIGHT FIXTURES	FIXTURE SPACING	PHOTOMETRIC CURVE	WATT	VOLTAGE
-----------------------	-----------------	-------------------	------	---------

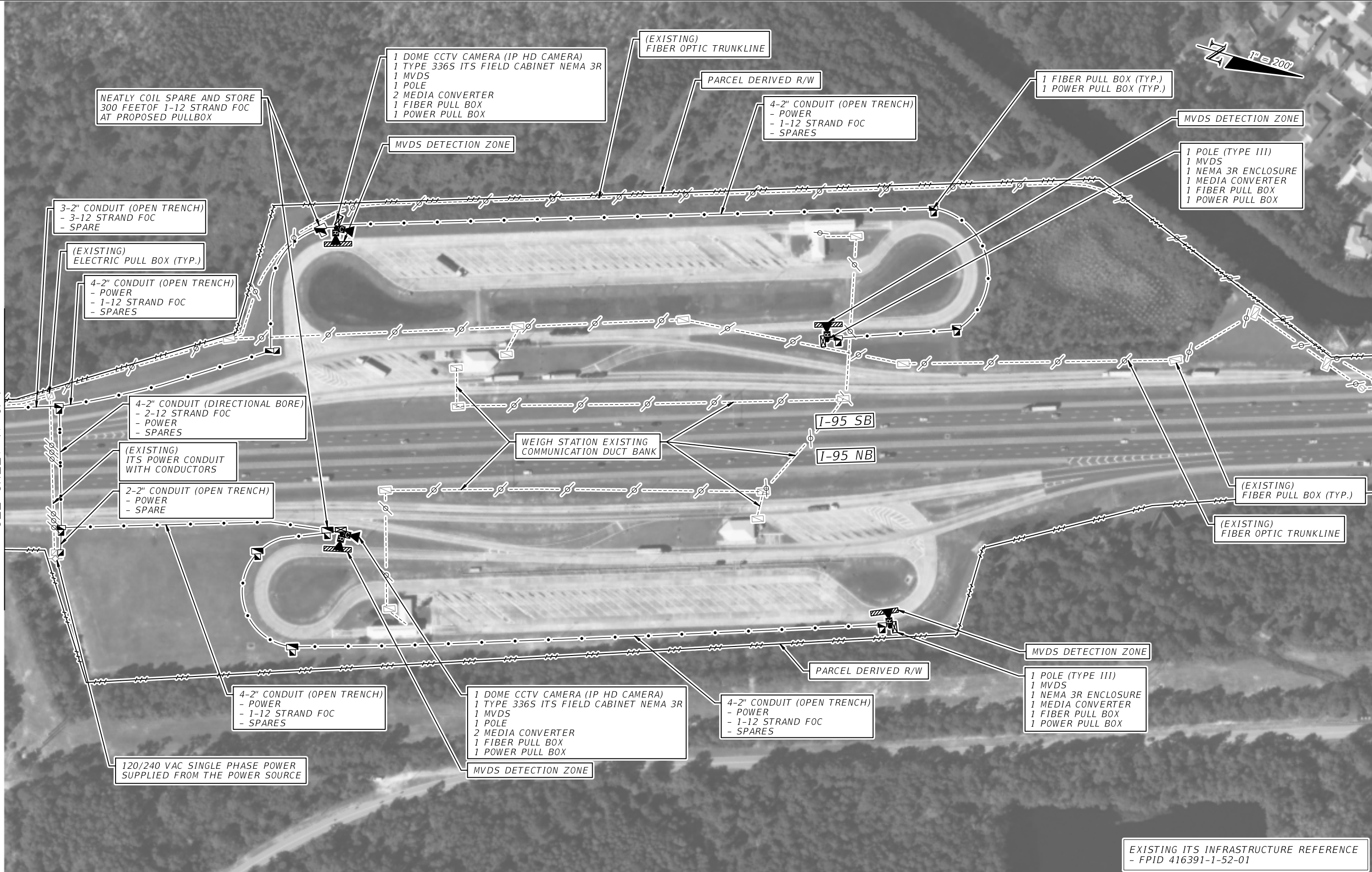
COPY																			
SPACE																			
COPY																			
SPACE																			
COPY																			
SPACE																			
COPY																			
SPACE																			
COPY																			
SPACE																			

REVISIONS			
DATE	DESCRIPTION	DATE	DESCRIPTION

STATE OF FLORIDA DEPARTMENT OF TRANSPORTATION		
ROAD NO.	COUNTY	FINANCIAL PROJECT ID
VARIES	VARIES	438096-1-52-01

<b>GUIDESIGN WORKSHEET</b>	SHEET NO.  3
----------------------------	--------------------

MATCH LINE  
SEE SHEET IT-01-1



NEATLY COIL SPARE AND STORE  
300 FEET OF 1-12 STRAND FOC  
AT PROPOSED PULLBOX

1 DOME CCTV CAMERA (IP HD CAMERA)  
1 TYPE 336S ITS FIELD CABINET NEMA 3R  
1 MVDS  
1 POLE  
2 MEDIA CONVERTER  
1 FIBER PULL BOX  
1 POWER PULL BOX

(EXISTING)  
FIBER OPTIC TRUNKLINE

PARCEL DERIVED R/W

4-2" CONDUIT (OPEN TRENCH)  
- POWER  
- 1-12 STRAND FOC  
- SPARES

1 FIBER PULL BOX (TYP.)  
1 POWER PULL BOX (TYP.)

MVDS DETECTION ZONE

1 POLE (TYPE III)  
1 MVDS  
1 NEMA 3R ENCLOSURE  
1 MEDIA CONVERTER  
1 FIBER PULL BOX  
1 POWER PULL BOX

3-2" CONDUIT (OPEN TRENCH)  
- 3-12 STRAND FOC  
- SPARE

(EXISTING)  
ELECTRIC PULL BOX (TYP.)

4-2" CONDUIT (OPEN TRENCH)  
- POWER  
- 1-12 STRAND FOC  
- SPARES

4-2" CONDUIT (DIRECTIONAL BORE)  
- 2-12 STRAND FOC  
- POWER  
- SPARES

(EXISTING)  
ITS POWER CONDUIT  
WITH CONDUCTORS

2-2" CONDUIT (OPEN TRENCH)  
- POWER  
- SPARE

WEIGH STATION EXISTING  
COMMUNICATION DUCT BANK

I-95 SB

I-95 NB

(EXISTING)  
FIBER PULL BOX (TYP.)

(EXISTING)  
FIBER OPTIC TRUNKLINE

MVDS DETECTION ZONE

PARCEL DERIVED R/W

4-2" CONDUIT (OPEN TRENCH)  
- POWER  
- 1-12 STRAND FOC  
- SPARES

1 DOME CCTV CAMERA (IP HD CAMERA)  
1 TYPE 336S ITS FIELD CABINET NEMA 3R  
1 MVDS  
1 POLE  
2 MEDIA CONVERTER  
1 FIBER PULL BOX  
1 POWER PULL BOX

4-2" CONDUIT (OPEN TRENCH)  
- POWER  
- 1-12 STRAND FOC  
- SPARES

1 POLE (TYPE III)  
1 MVDS  
1 NEMA 3R ENCLOSURE  
1 MEDIA CONVERTER  
1 FIBER PULL BOX  
1 POWER PULL BOX

120/240 VAC SINGLE PHASE POWER  
SUPPLIED FROM THE POWER SOURCE

MVDS DETECTION ZONE

EXISTING ITS INFRASTRUCTURE REFERENCE  
- FPID 416391-1-52-01

REVISIONS				STATE OF FLORIDA DEPARTMENT OF TRANSPORTATION	TRUCK PARKING AVAILABILITY SYSTEM FLAGLER COUNTY, FDOT DISTRICT 5 WEIGH STATION 50671 (33 SPACES) NORTHBOUND MILE MARKER 286 WEIGH STATION 50672 (33 SPACES) SOUTHBOUND MILE MARKER 286	SHEET NO.  IT-01
DATE	DESCRIPTION	DATE	DESCRIPTION			



NEATLY COIL AND STORE 2- 12 STRAND FOC (100 FT EACH) AT EXISTING SPLICE VAULT ORIGINATING FROM PULL BOX NEAR EACH PROPOSED CCTV

INTERCEPT EXISTING FIBER SPLICE VAULT

INSTALL NEW COMMUNICATION CABLE USING EXISTING CONDUIT ENTERING INTO EXISTING CABINET

1 MEDIA CONVERTER IN THE EXISTING ITS CABINET

(EXISTING) FIBER SPLICE VAULT

PARCEL DERIVED R/W

FIBER PULL BOX (TYP)

3 -2" CONDUIT (OPEN TRENCH)  
3 - 12 STRAND FOC  
SPARE

(EXISTING) ELECTRICAL PULL BOX (TYP.)

I-95 SB

I-95 NB

PARCEL DERIVED R/W

(EXISTING) ITS DEVICES  
- MVDS  
- CCTV

MATCH LINE  
SEE SHEET IT-01

EXISTING ITS INFRASTRUCTURE REFERENCE  
- FPID 416391-1-52-01

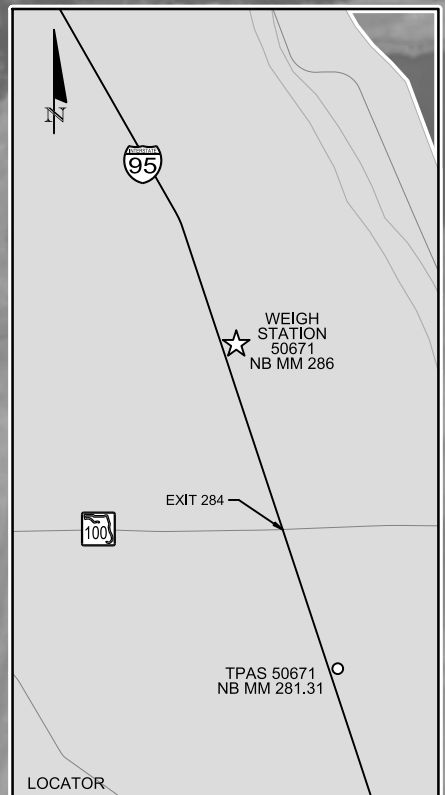
REVISIONS				STATE OF FLORIDA DEPARTMENT OF TRANSPORTATION	TRUCK PARKING AVAILABILITY SYSTEM FLAGLER COUNTY, FDOT DISTRICT 5 WEIGH STATION 50671 (33 SPACES) NORTHBOUND MILE MARKER 286 WEIGH STATION 50672 (33 SPACES) SOUTHBOUND MILE MARKER 286	SHEET NO.  IT-01-1
DATE	DESCRIPTION	DATE	DESCRIPTION			



MILE MARKER 281

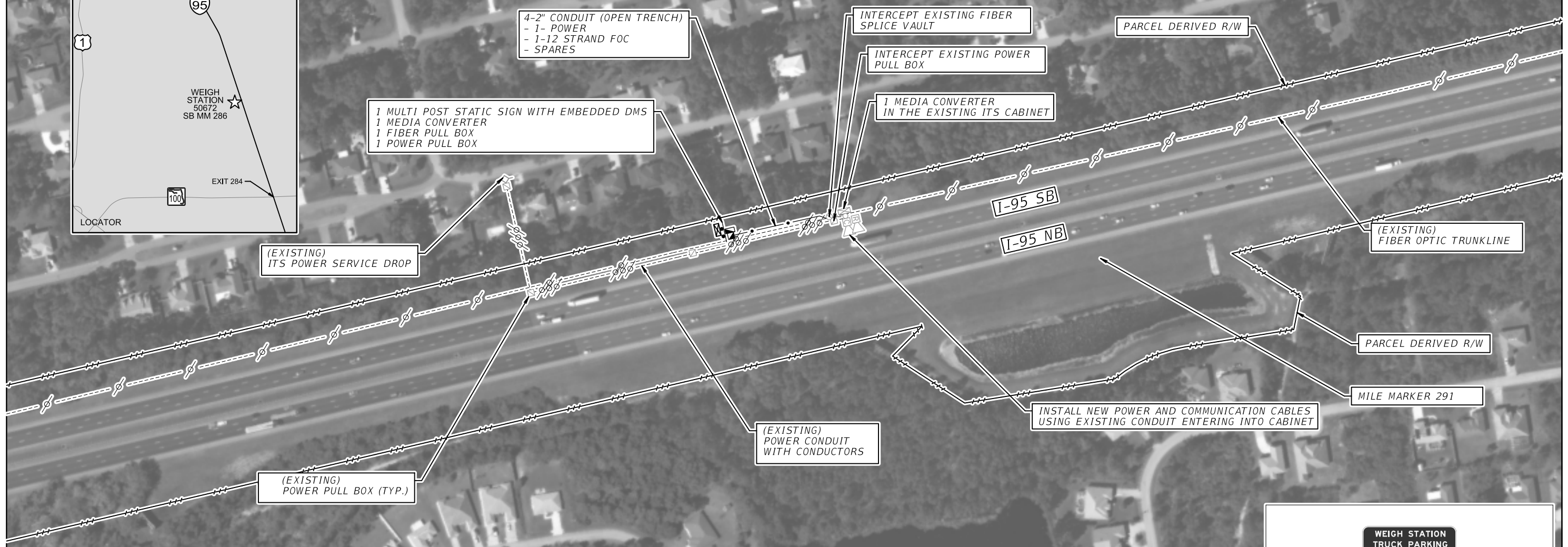
TRUCK PARKING AVAILABILITY SIGN WITH 3-DIGIT EMBEDDED DMS AT NB MM 281.31 SOUTH OF WEIGH STATION (MM 286) (ADJUST SIGN LOCATIONS PER MUTCD SIGN SPACING REQUIREMENTS)

- 3-DIGIT EMBEDDED DMS
- POWER FROM NEAREST ITS CABINET
- POLE MOUNTED NEMA CABINET
- COMMUNICATION FROM NEAREST ITS CABINET



EXISTING ITS INFRASTRUCTURE REFERENCE  
- FPID 416391-1-52-01

REVISIONS				STATE OF FLORIDA DEPARTMENT OF TRANSPORTATION			TRUCK PARKING AVAILABILITY SYSTEM FLAGLER COUNTY, FDOT DISTRICT 5 TPAS SIGN 50671 NORTHBOUND MILE MARKER 281.31	SHEET NO.
DATE	DESCRIPTION	DATE	DESCRIPTION	ROAD NO.	COUNTY	FINANCIAL PROJECT ID		IT-01A
				I-95	FLAGLER	438096-1-52-01		

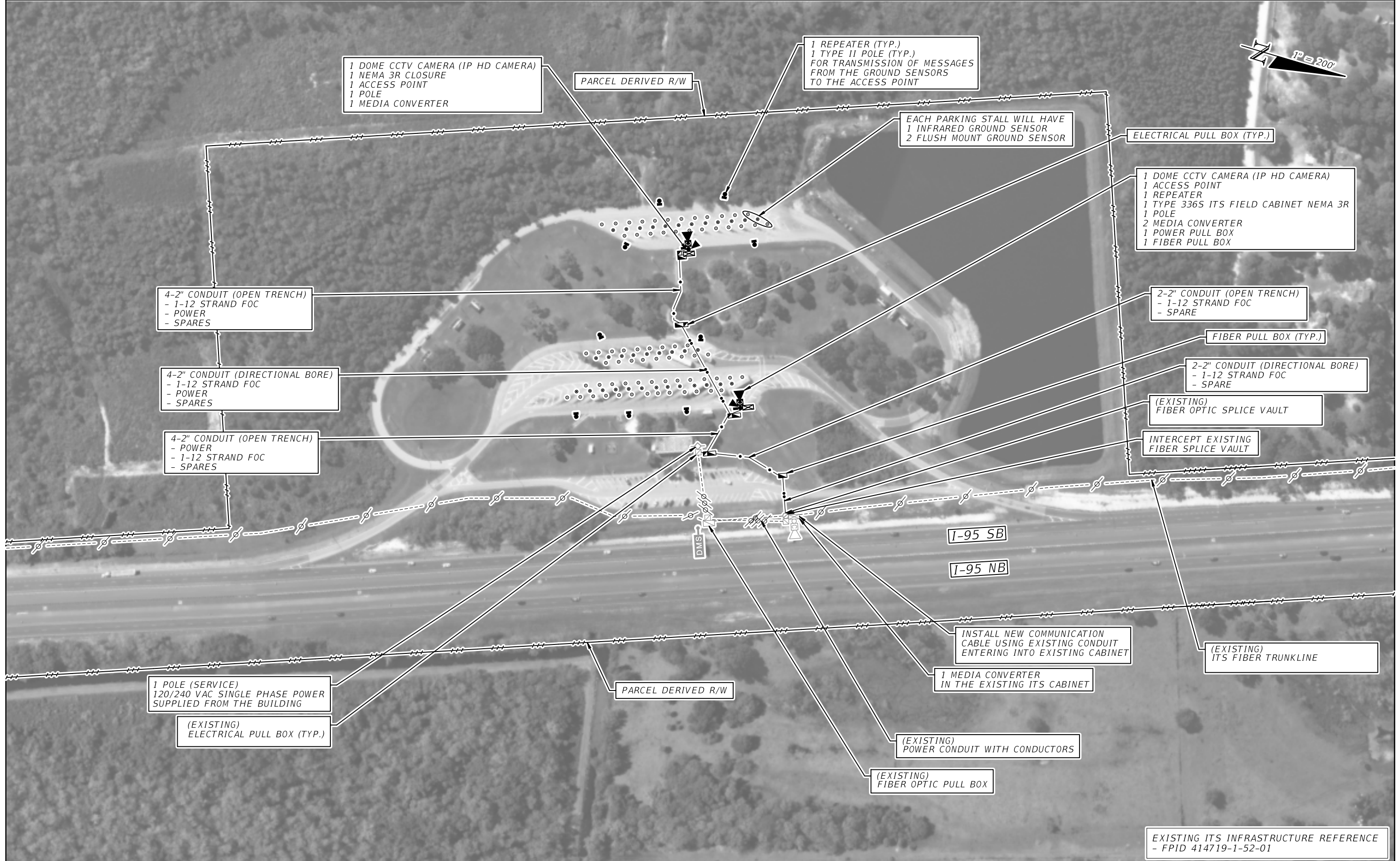


TRUCK PARKING AVAILABILITY SIGN WITH 3-DIGIT EMBEDDED DMS AT SB MM 290.87 NORTH OF WEIGH STATION (MM 286) (ADJUST SIGN LOCATIONS PER MUTCD SIGN SPACING REQUIREMENTS)

- 3-DIGIT EMBEDDED DMS
- POWER FROM NEAREST ITS CABINET
- POLE MOUNTED NEMA CABINET
- COMMUNICATION FROM NEAREST ITS CABINET

EXISTING ITS INFRASTRUCTURE REFERENCE  
- FPID 416391-1-52-01

REVISIONS				STATE OF FLORIDA DEPARTMENT OF TRANSPORTATION	TRUCK PARKING AVAILABILITY SYSTEM FLAGLER COUNTY, FDOT DISTRICT 5 TPAS SIGN 50672 SOUTHBOUND MILE MARKER 290.87	SHEET NO.  IT-01B
DATE	DESCRIPTION	DATE	DESCRIPTION			
				I-95	FLAGLER	438096-1-52-01



1 DOME CCTV CAMERA (IP HD CAMERA)  
 1 NEMA 3R CLOSURE  
 1 ACCESS POINT  
 1 POLE  
 1 MEDIA CONVERTER

PARCEL DERIVED R/W

1 REPEATER (TYP.)  
 1 TYPE II POLE (TYP.)  
 FOR TRANSMISSION OF MESSAGES  
 FROM THE GROUND SENSORS  
 TO THE ACCESS POINT

EACH PARKING STALL WILL HAVE  
 1 INFRARED GROUND SENSOR  
 2 FLUSH MOUNT GROUND SENSOR

ELECTRICAL PULL BOX (TYP.)

1 DOME CCTV CAMERA (IP HD CAMERA)  
 1 ACCESS POINT  
 1 REPEATER  
 1 TYPE 336S ITS FIELD CABINET NEMA 3R  
 1 POLE  
 2 MEDIA CONVERTER  
 1 POWER PULL BOX  
 1 FIBER PULL BOX

4-2" CONDUIT (OPEN TRENCH)  
 - 1-12 STRAND FOC  
 - POWER  
 - SPARES

4-2" CONDUIT (DIRECTIONAL BORE)  
 - 1-12 STRAND FOC  
 - POWER  
 - SPARES

4-2" CONDUIT (OPEN TRENCH)  
 - POWER  
 - 1-12 STRAND FOC  
 - SPARES

2-2" CONDUIT (OPEN TRENCH)  
 - 1-12 STRAND FOC  
 - SPARE

FIBER PULL BOX (TYP.)

2-2" CONDUIT (DIRECTIONAL BORE)  
 - 1-12 STRAND FOC  
 - SPARE

(EXISTING)  
 FIBER OPTIC SPLICE VAULT

INTERCEPT EXISTING  
 FIBER SPLICE VAULT

I-95 SB

I-95 NB

INSTALL NEW COMMUNICATION  
 CABLE USING EXISTING CONDUIT  
 ENTERING INTO EXISTING CABINET

1 MEDIA CONVERTER  
 IN THE EXISTING ITS CABINET

(EXISTING)  
 ITS FIBER TRUNKLINE

1 POLE (SERVICE)  
 120/240 VAC SINGLE PHASE POWER  
 SUPPLIED FROM THE BUILDING

(EXISTING)  
 ELECTRICAL PULL BOX (TYP.)

PARCEL DERIVED R/W

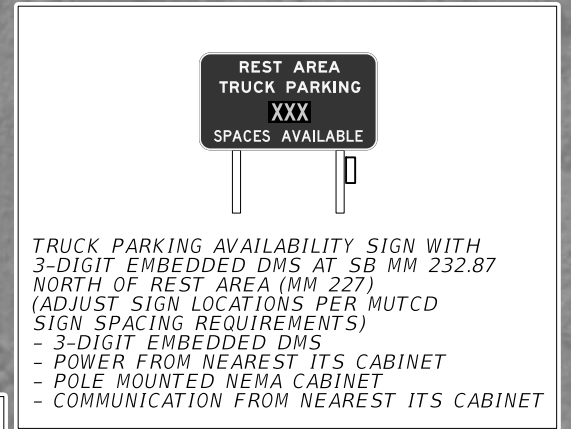
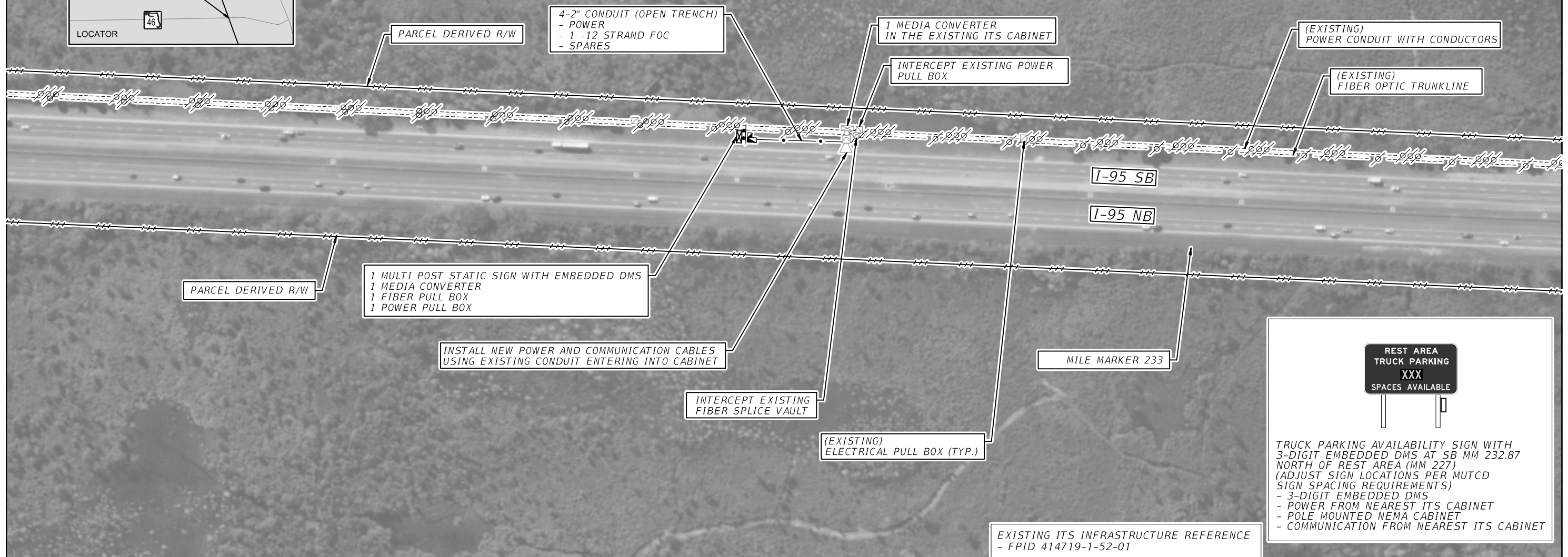
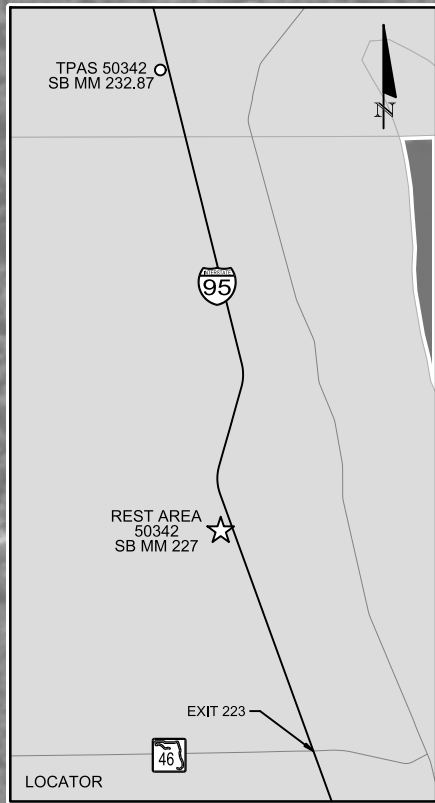
(EXISTING)  
 POWER CONDUIT WITH CONDUCTORS

(EXISTING)  
 FIBER OPTIC PULL BOX

EXISTING ITS INFRASTRUCTURE REFERENCE  
 - FPID 414719-1-52-01

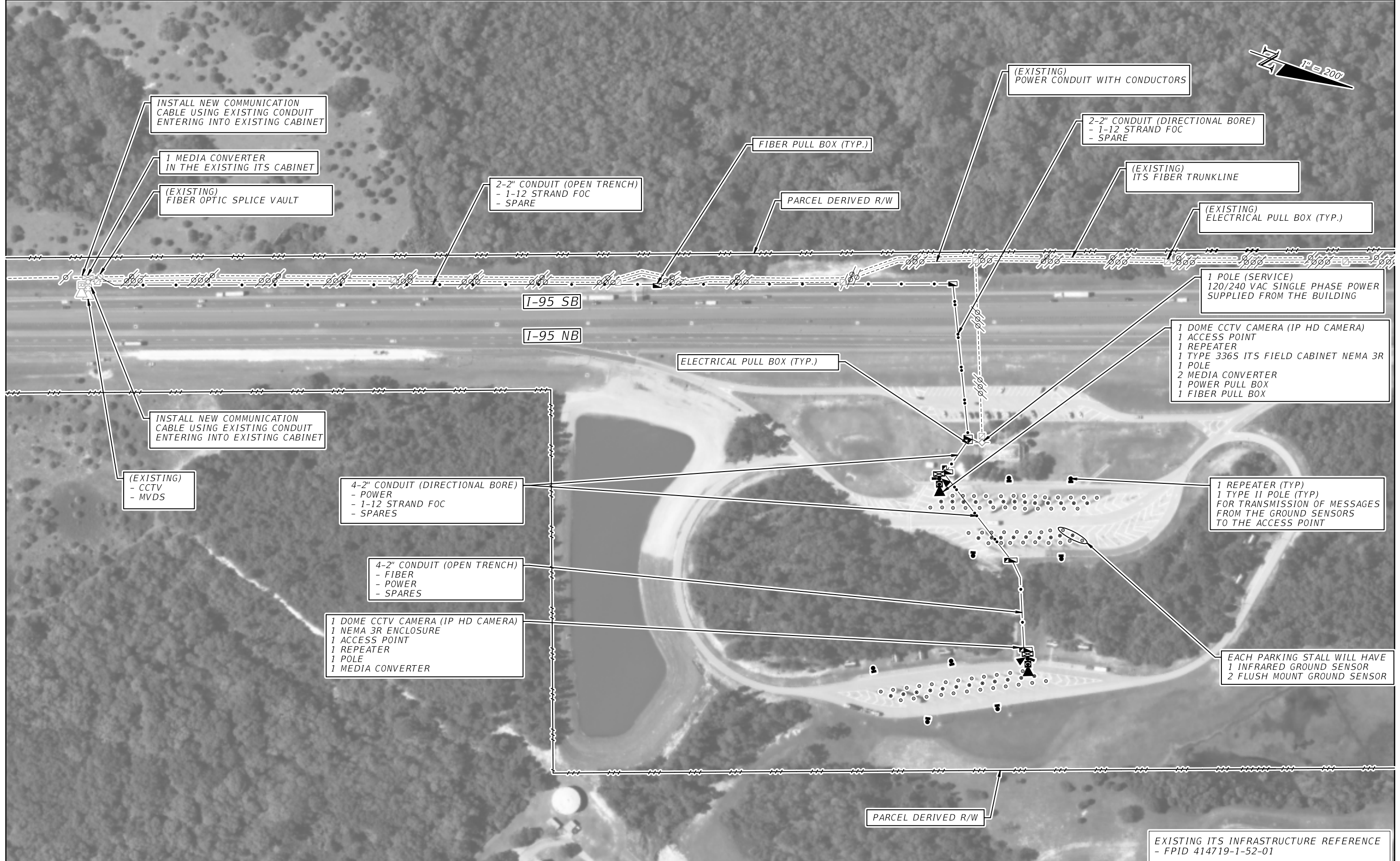
REVISIONS				STATE OF FLORIDA DEPARTMENT OF TRANSPORTATION	TRUCK PARKING AVAILABILITY SYSTEM BREVARD COUNTY, FDOT DISTRICT 5 REST AREA 50342 (34 SPACES) SOUTHBOUND MILE MARKER 227	SHEET NO.  IT-02
DATE	DESCRIPTION	DATE	DESCRIPTION			



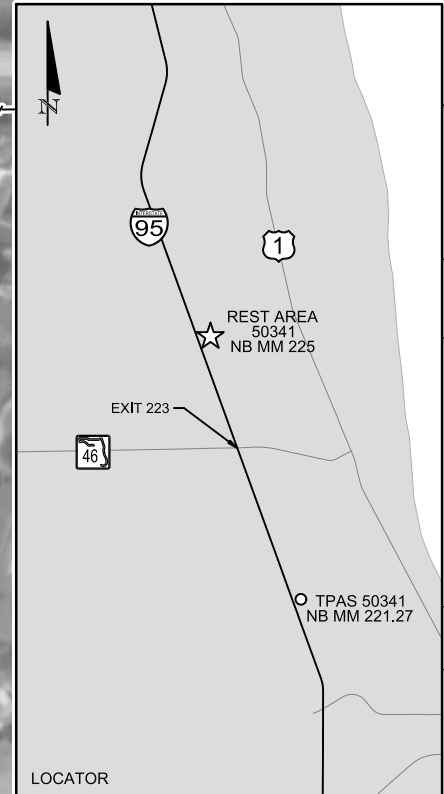


EXISTING ITS INFRASTRUCTURE REFERENCE  
- FPID 414719-1-52-01

REVISIONS				STATE OF FLORIDA DEPARTMENT OF TRANSPORTATION	TRUCK PARKING AVAILABILITY SYSTEM VOLUSIA COUNTY, FDOT DISTRICT 5 TPAS SIGN 50342 SOUTHBOUND MILE MARKER 232.87	SHEET NO.  IT-02A
DATE	DESCRIPTION	DATE	DESCRIPTION			



REVISIONS				STATE OF FLORIDA DEPARTMENT OF TRANSPORTATION			TRUCK PARKING AVAILABILITY SYSTEM BREVARD COUNTY, FDOT DISTRICT 5 REST AREA 50341 (33 SPACES) NORTHBOUND MILE MARKER 225	SHEET NO.  IT-03
DATE	DESCRIPTION	DATE	DESCRIPTION	ROAD NO.	COUNTY	FINANCIAL PROJECT ID		
				I-95	BREVARD	438096-1-52-01		



**REST AREA TRUCK PARKING XXX SPACES AVAILABLE**

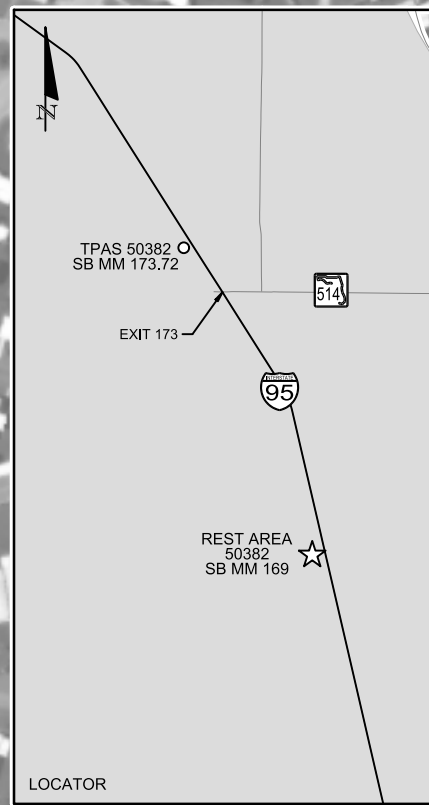
TRUCK PARKING AVAILABILITY SIGN WITH 3-DIGIT EMBEDDED DMS AT NB MM 221.27 SOUTH OF REST AREA (MM 225) (ADJUST SIGN LOCATION PER MUTCD SIGN SPACING REQUIREMENTS)

- 3-DIGIT EMBEDDED DMS
- POWER FROM NEAREST ITS CABINET
- POLE MOUNTED NEMA CABINET
- COMMUNICATION FROM NEAREST ITS CABINET

REVISIONS				STATE OF FLORIDA DEPARTMENT OF TRANSPORTATION	TRUCK PARKING AVAILABILITY SYSTEM BREVARD COUNTY, FDOT DISTRICT 5 TPAS SIGN 50341 NORTHBOUND MILE MARKER 221.27	SHEET NO.  IT-03A
DATE	DESCRIPTION	DATE	DESCRIPTION			



REVISIONS					STATE OF FLORIDA DEPARTMENT OF TRANSPORTATION			TRUCK PARKING AVAILABILITY SYSTEM BREVARD COUNTY, FDOT DISTRICT 5 REST AREA 50382 (68 SPACES) SOUTHBOUND MILE MARKER 169	SHEET NO.  IT-04
DATE	DESCRIPTION	DATE	DESCRIPTION		ROAD NO.	COUNTY	FINANCIAL PROJECT ID		
					I-95	BREVARD	438096-1-52-01		

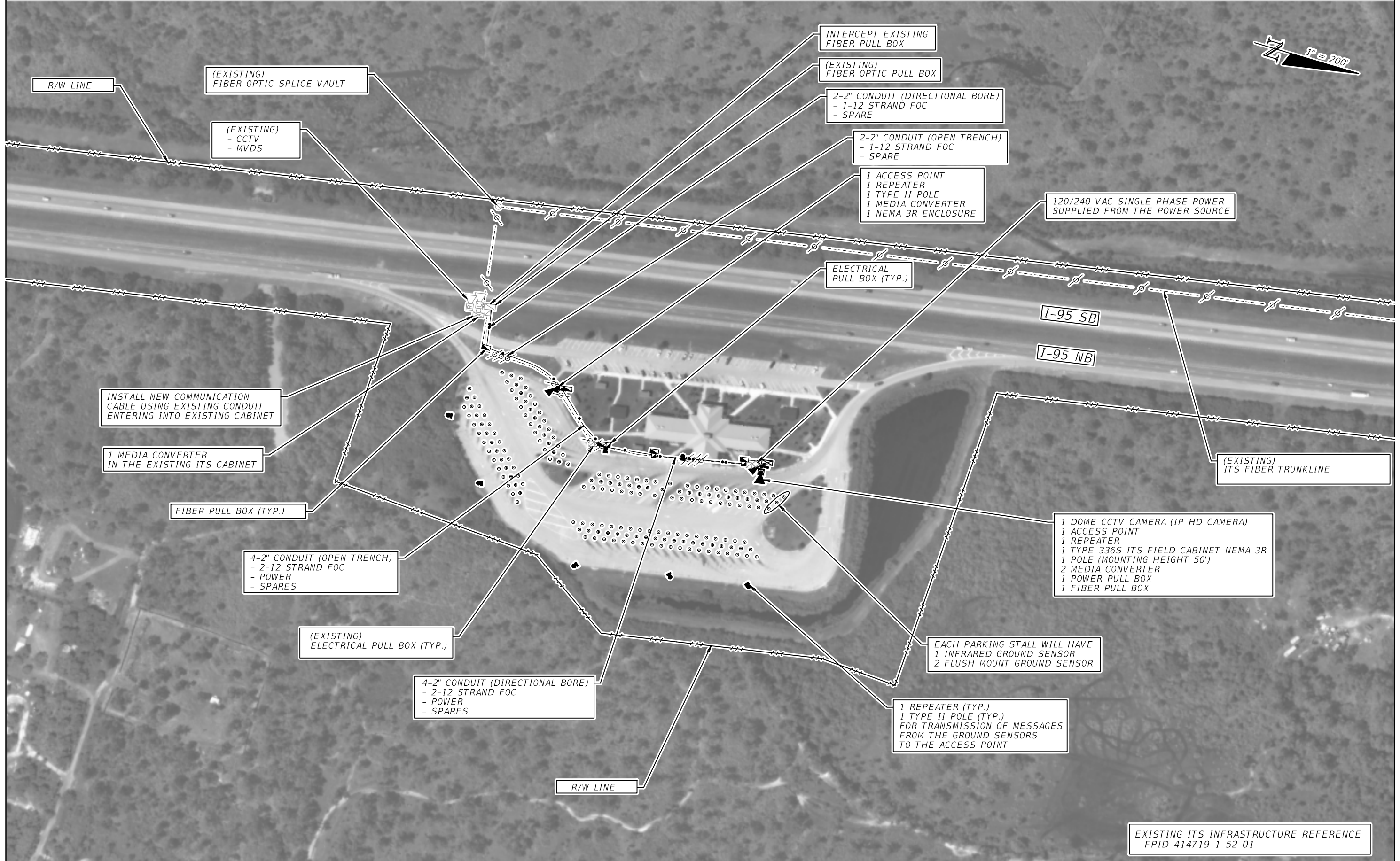


TRUCK PARKING AVAILABILITY SIGN WITH 3-DIGIT EMBEDDED DMS AT SB MM 173.72 NORTH OF REST AREA (MM 169) (ADJUST SIGN LOCATION PER MUTCD SIGN SPACING REQUIREMENTS)

- 3-DIGIT EMBEDDED DMS
- POWER FROM NEAREST ITS CABINET
- POLE MOUNTED NEMA CABINET
- COMMUNICATION FROM NEAREST ITS CABINET

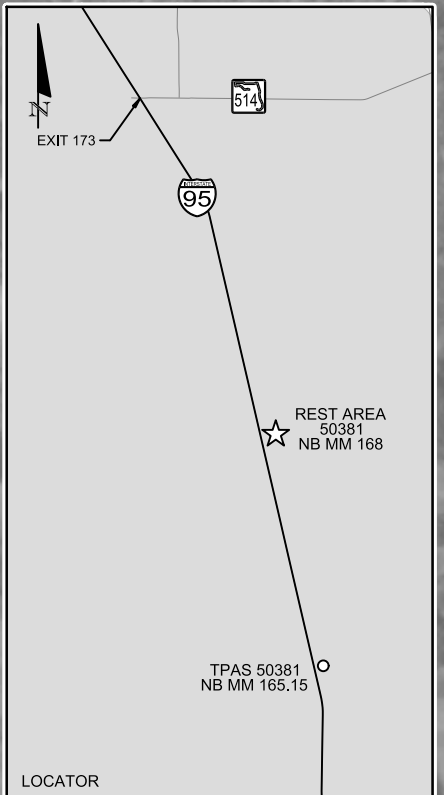
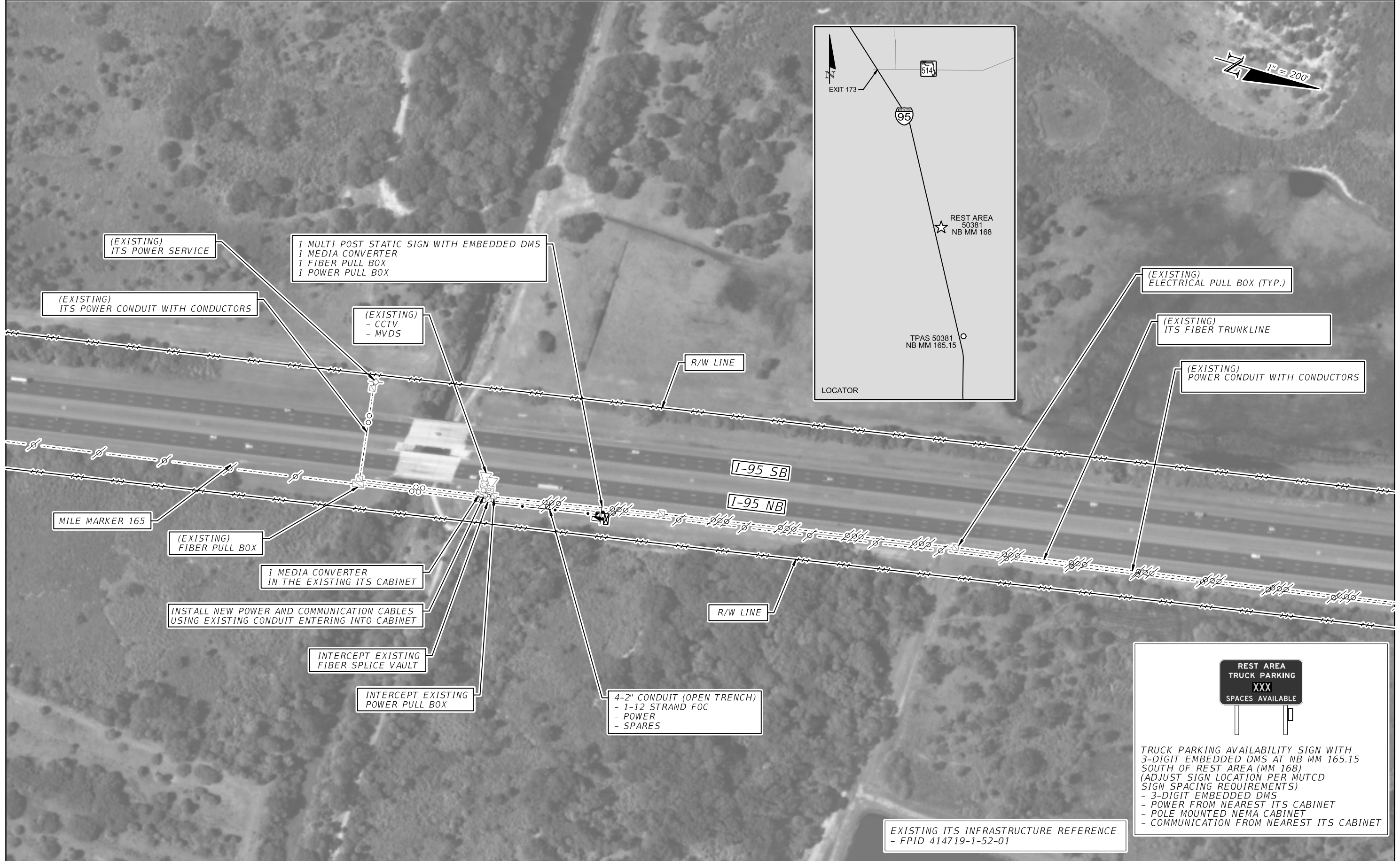
EXISTING ITS INFRASTRUCTURE REFERENCE - FPID 414719-1-52-01

REVISIONS				STATE OF FLORIDA DEPARTMENT OF TRANSPORTATION	TRUCK PARKING AVAILABILITY SYSTEM BREVARD COUNTY, FDOT DISTRICT 5 TPAS SIGN 50382 SOUTHBOUND MILE MARKER 173.72	SHEET NO.  IT-04A
DATE	DESCRIPTION	DATE	DESCRIPTION			



EXISTING ITS INFRASTRUCTURE REFERENCE  
- FPID 414719-1-52-01

REVISIONS				STATE OF FLORIDA DEPARTMENT OF TRANSPORTATION	TRUCK PARKING AVAILABILITY SYSTEM BREVARD COUNTY, FDOT DISTRICT 5 REST AREA 50381 (61 SPACES) NORTHBOUND MILE MARKER 168	SHEET NO.  IT-05
DATE	DESCRIPTION	DATE	DESCRIPTION			



REVISIONS			
DATE	DESCRIPTION	DATE	DESCRIPTION

<b>STATE OF FLORIDA</b> <b>DEPARTMENT OF TRANSPORTATION</b>		
ROAD NO.	COUNTY	FINANCIAL PROJECT ID
1-95	BREVARD	438096-1-52-01

**TRUCK PARKING AVAILABILITY SYSTEM**  
**BREVARD COUNTY, FDOT DISTRICT 5**  
**TPAS SIGN 50381**  
**NORTHBOUND MILE MARKER 165.15**

**SHEET NO.**  
**IT-05A**



EXISTING ITS INFRASTRUCTURE REFERENCE  
 BASED ON FDOT OSP LINK  
[-http://www.acstraffic.net/GE/FDOT OSPInsight Export for Google Earth.kmz](http://www.acstraffic.net/GE/FDOT%20OSPInsight%20Export%20for%20Google%20Earth.kmz)


REVISIONS				STATE OF FLORIDA DEPARTMENT OF TRANSPORTATION	TRUCK PARKING AVAILABILITY SYSTEM SEMINOLE COUNTY, FDOT DISTRICT 5 REST AREA 50221 (17 SPACES) EASTBOUND MILE MARKER 96	SHEET NO.  IT-06
DATE	DESCRIPTION	DATE	DESCRIPTION			





1 MULTI POST STATIC SIGN WITH EMBEDDED DMS  
 1 MEDIA CONVERTER  
 1 FIBER PULL BOX  
 1 POWER PULL BOX

4 - 2" CONDUIT (OPEN TRENCH)  
 - 1-12 STRAND FOC  
 - POWER  
 - SPARES



REST AREA  
TRUCK PARKING  
XXX  
SPACES AVAILABLE

TRUCK PARKING AVAILABILITY SIGN WITH 3-DIGIT EMBEDDED DMS AT EB MM 92.84 WEST OF REST AREA (MM 96) (ADJUST SIGN LOCATION PER MUTCD SIGN SPACING REQUIREMENTS)  
 - 3-DIGIT EMBEDDED DMS  
 - POWER FROM NEAREST ITS CABINET  
 - POLE MOUNTED NEMA CABINET  
 - COMMUNICATION FROM NEAREST ITS CABINET

EXISTING ITS INFRASTRUCTURE REFERENCE  
 BASED ON FDOT OSP LINK  
 -<http://www.acstraffic.net/GE/FDOT OSPInsight Export for Google Earth.kmz>

REVISIONS				STATE OF FLORIDA DEPARTMENT OF TRANSPORTATION			TRUCK PARKING AVAILABILITY SYSTEM SEMINOLE COUNTY, FDOT DISTRICT 5 TPAS SIGN 50221 EASTBOUND MILE MARKER 92.84	SHEET NO.  IT-06A
DATE	DESCRIPTION	DATE	DESCRIPTION	ROAD NO.	COUNTY	FINANCIAL PROJECT ID		
				I-4	SEMINOLE	438096-1-52-01		