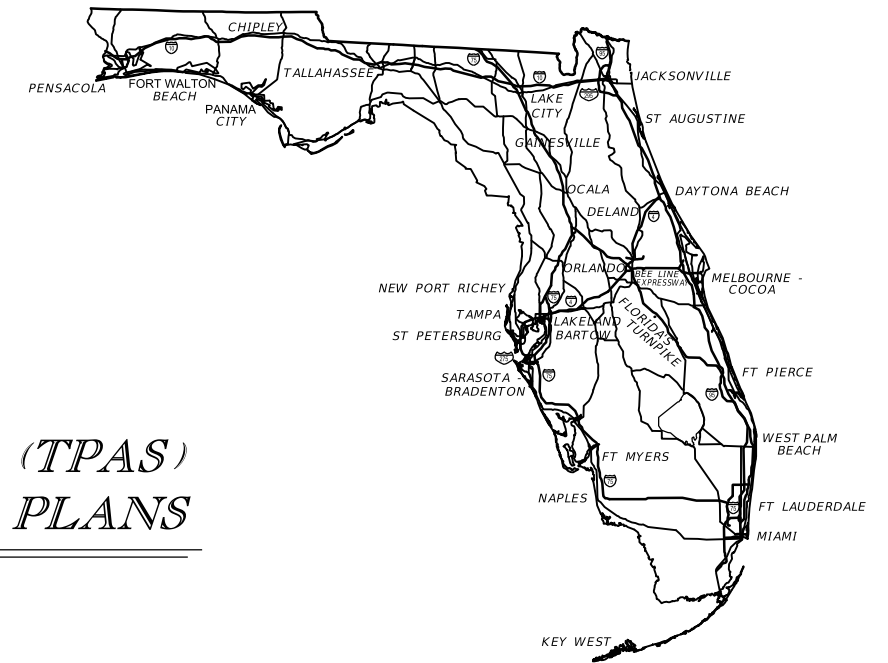


STATE OF FLORIDA
DEPARTMENT OF TRANSPORTATION

CONTRACT PLANS

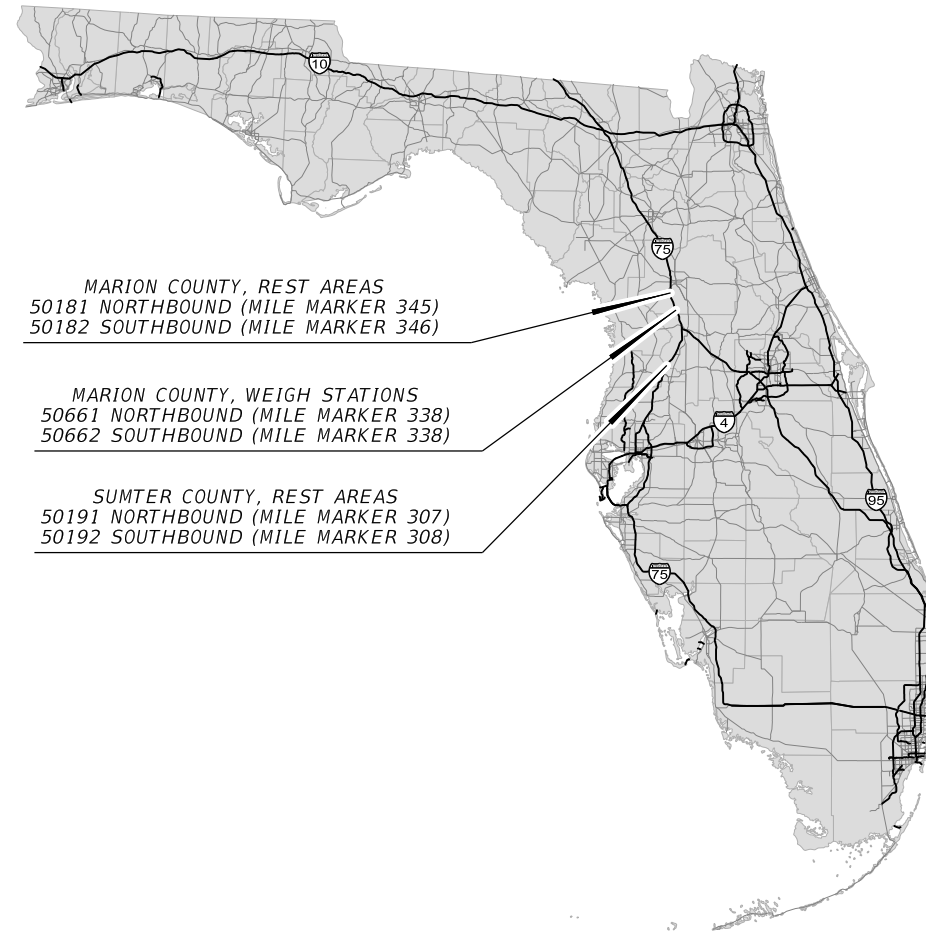
FINANCIAL PROJECT ID 440222-1-52-01
(FEDERAL FUNDS)



INDEX OF TPAS PLANS

SHEET NO.	SHEET DESCRIPTION
1	KEY SHEET
2	GENERAL NOTES
3	GUIDESIGN WORKSHEET
IT-01 TO IT-05A	ITS PLAN SHEETS

TRUCK PARKING AVAILABILITY SYSTEMS (TPAS)
INTELLIGENT TRANSPORTATION SYSTEM PLANS



MARION COUNTY, REST AREAS
50181 NORTHBOUND (MILE MARKER 345)
50182 SOUTHBOUND (MILE MARKER 346)

MARION COUNTY, WEIGH STATIONS
50661 NORTHBOUND (MILE MARKER 338)
50662 SOUTHBOUND (MILE MARKER 338)

SUMTER COUNTY, REST AREAS
50191 NORTHBOUND (MILE MARKER 307)
50192 SOUTHBOUND (MILE MARKER 308)

ITS SHOP DRAWINGS
TO BE SUBMITTED TO:

30% PLANS PREPARED BY:

NOTE: THE SCALE OF THESE PLANS MAY
HAVE CHANGED DUE TO REPRODUCTION.

GOVERNING STANDARDS AND SPECIFICATIONS:
Florida Department of Transportation, 2017 Design Standards and revised Index Drawings as appended herein, and 2017 Standard Specifications for Road and Bridge Construction, as amended by Contract Documents.

For Design Standards click on the "Design Standards" link at the following web site:
<http://www.dot.state.fl.us/rddesign/DesignStandards>

For the Standard Specifications for Road and Bridge Construction click on the "Specifications" link at the following web site:
<http://www.dot.state.fl.us/specificationsoffice/StandardSpecifications>

KEY SHEET REVISIONS	
DATE	DESCRIPTION
FOR ILLUSTRATION PURPOSE ONLY	

TRUCK PARKING AVAILABILITY
SYSTEMS (TPAS) PLANS
ENGINEER OF RECORD: _____

P.E. NO.: _____

FDOT PROJECT MANAGER:

FISCAL YEAR	SHEET NO.
16	1

GENERAL NOTES

1. THE LOCATION(S) OF THE UTILITIES SHOWN IN THE PLANS ARE BASED ON LIMITED INVESTIGATION TECHNIQUES, AND MARK-UPS FROM UTILITY OWNERS. ALL UTILITIES SHOULD BE CONSIDERED APPROXIMATE ONLY.
2. THE CONTRACTOR SHALL NOTIFY UTILITY OWNERS LISTED THROUGH SUNSHINE STATE ONE CALL OF FLORIDA (811) TWO BUSINESS DAYS IN ADVANCE OF BEGINNING CONSTRUCTION ON THE JOB SITE.
3. FIBER OPTIC AND POWER PULL BOXES AND CONDUIT SHALL BE LOCATED WITHIN 100 FEET OF THE DEVICE THEY SUPPORT. ITS DEVICE LOCATIONS ARE APPROXIMATE AND MAY REQUIRE RELOCATION BY THE PROJECT ENGINEER. IF DEVICE RELOCATIONS OCCUR FOR ANY REASON, THE PULL BOXES AND CONDUIT SUPPORTING THAT DEVICE SHALL BE RELOCATED AND/OR EXTENDED.
4. INSTALL FIBER OPTIC CONDUIT FOR COMMUNICATION TO DEVICES AS SHOWN IN THE PLANS AND IN ACCORDANCE WITH ALL FDOT STANDARDS FOR CONDUIT INSTALLATION.
5. THE CONTRACTOR SHALL BE RESPONSIBLE FOR FURNISHING AND INSTALLING ABOVE GROUND TUBULAR ROUTE MARKERS PER THE FDOT STANDARD SPECIFICATIONS. A MARKER LABEL TEMPLATE SHALL BE PROVIDED FOR REVIEW.
6. THE CONDUIT SHALL BE SEALED WITH THE SPECIFIED DUCT PLUG AT THE TIME OF CONDUIT INSTALLATION AND AFTER FINAL INSTALLATION.
7. ELECTRICAL POWER SERVICE METERS SHALL HAVE A SEPARATE BREAKER FOR EACH ITS CIRCUIT.
8. THE CONTRACTOR SHALL HAND DIG (SOFT DIG) TO A DEPTH OF FOUR (4) FEET WHERE UTILITIES ARE IN CONFLICT PRIOR TO USE OF A MECHANICAL AUGER. ANY POTENTIAL CONFLICTS SHALL BE REPORTED TO THE PROJECT ENGINEER IMMEDIATELY.

UTILITY OWNERS

BRIGHT HOUSE NETWORKS (MARION)
JOHN WOLSKI
john.wolski@charter.com

CABLEVISION OF MARION COUNTY
BEN ARDILES
352-854-0408 X212
352-854-1829
ben@lightningspeed.net

CENTURY LINK - OCALA
KIRBY SMITH
kirby.w.smith@centurylink.com
352-326-1722

FLORIDA CABLE INC
WAYNE
352-759-2788
352-267-4931

FLORIDA PUBLIC UTILITIES
DAN SCRIBBEN
386-668-9319
386-747-8703
delliott@fpuc.com

MARION COUNTY UTILITIES
MARK WILLIAMS
352-438-2381

SUMTER ELECTRIC COOPERATIVE INC
TRACEY COTTRELL
352-569-9665
tracey.cottrell@secoenergy.com

TECO PEOPLES GAS OCALA
CHRIS URIA
352-622-0111
904-739-4874
904-237-6912 cell
ckuria@tecoenergy.com

TRANSCORE
TUSHAR PATEL
386-943-5315
tushar.patel@dot.state.fl.us

WITHLACOCHEE RIVER ELECTRIC COOP
DON TAULBEE
352-596-4000 X3139
dtaulbee@wrec.net

FDOT DISTRICT 5
RYAN COULTER
TME 352-538-5739
ryan.coulter@tmeenterprises.com

UTILITY OWNERS (CONTINUED)

LEGEND

EXISTING	PROPOSED	
		GROUND SENSORS
		REPEATER
		ACCESS POINT
		DETECTION ZONE
		CCTV WITH POLE
		MVDS
		MULTI-POST STATIC SIGN W/ ELECTRICAL DISPLAY SIGN
		BASE MOUNT CABINET
		POLE MOUNT CABINET
		PULL BOX
		FIBER OPTIC PULL BOX
		SPLICE VAULT
		POWER SERVICE
		POLE
		DMS
		CONDUIT, OPEN TRENCH
		CONDUIT, DIRECTIONAL BORE
		FIBER OPTIC RUN
		POWER RUN

REVISIONS				STATE OF FLORIDA DEPARTMENT OF TRANSPORTATION	GENERAL NOTES	SHEET NO. 2
DATE	DESCRIPTION	DATE	DESCRIPTION			
			FOR ILLUSTRATION PURPOSE ONLY			
				VARIES	VARIES	440222-1-52-01



EXISTING ITS INFRASTRUCTURE REFERENCE
- FPID 242626-2-52-01

REVISIONS				FOR ILLUSTRATION PURPOSE ONLY	STATE OF FLORIDA DEPARTMENT OF TRANSPORTATION			TRUCK PARKING AVAILABILITY SYSTEM SUMTER COUNTY, FDOT DISTRICT 5 REST AREA 50191 (44 SPACES) NORTHBOUND MILE MARKER 307	SHEET NO. IT-01
DATE	DESCRIPTION	DATE	DESCRIPTION		ROAD NO.	COUNTY	FINANCIAL PROJECT ID		
					I-75	SUMTER	440222-1-52-01		



1 REPEATER (TYP.)
 1 TYPE II POLE (TYP.)
 FOR TRANSMISSION OF MESSAGES
 FROM THE GROUND SENSORS
 TO THE ACCESS POINT

3-2" CONDUIT (OPEN TRENCH)
 - POWER
 - 1-12 STRAND FOC
 - SPARE

1 DOME CCTV CAMERA (IP HD CAMERA)
 1 ACCESS POINT
 1 REPEATER
 1 TYPE 336S ITS FIELD CABINET NEMA 3R
 1 POLE
 1 MEDIA CONVERTER
 1 ETHERNET SWITCH
 1 FOC PATCH PANEL
 1 BUFFER TUBE FAN OUT KIT
 1 FOC CONNECTOR PANEL
 4 FO TERMINATIONS

EACH TRUCK PARKING STALL
 WILL HAVE AN ARRAY OF
 IN-GROUND SENSORS (TYP.)

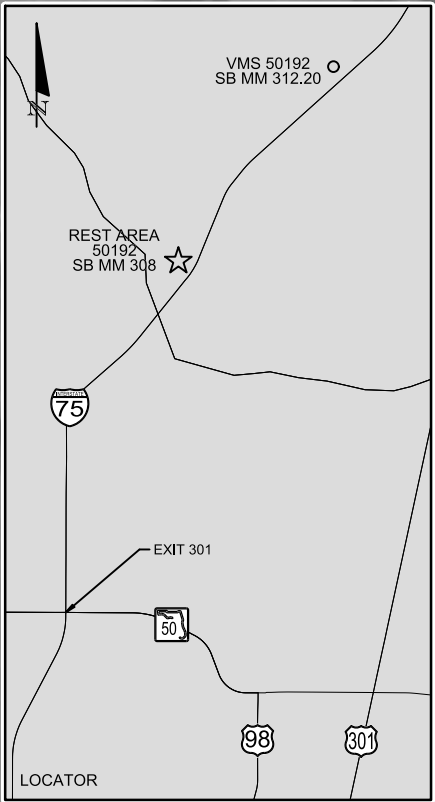
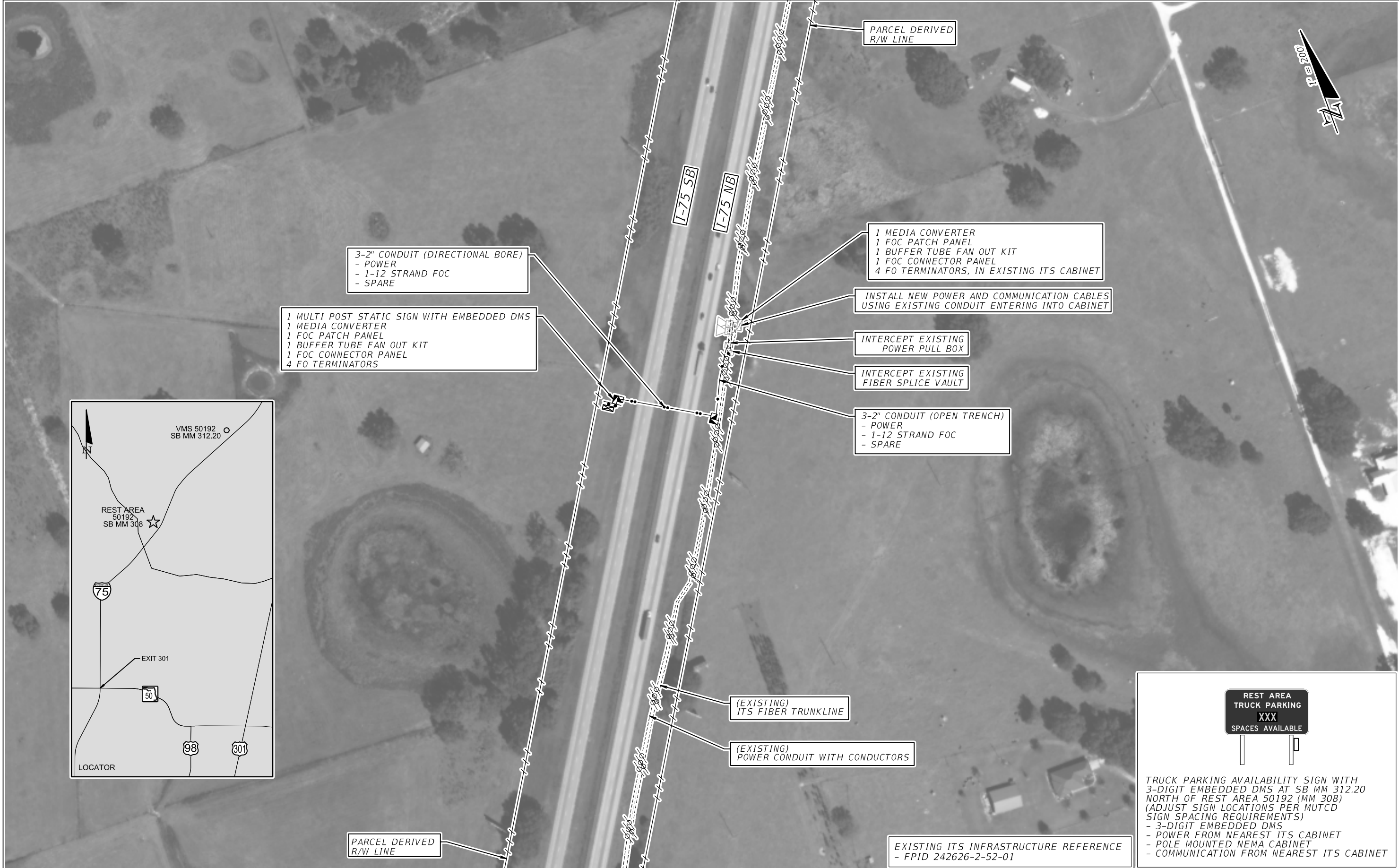
1 DOME CCTV CAMERA (IP HD CAMERA)
 1 ACCESS POINT
 1 REPEATER
 1 TYPE 336S ITS FIELD CABINET NEMA 3R
 1 POLE
 1 MEDIA CONVERTER
 1 ETHERNET SWITCH
 1 FOC PATCH PANEL
 1 BUFFER TUBE FAN OUT KIT
 1 FOC CONNECTOR PANEL
 8 FO TERMINATIONS

3-2" CONDUIT (DIRECTIONAL BORE)
 - 1-12 STRAND FOC
 - POWER
 - SPARE

3-2" CONDUIT (DIRECTIONAL BORE)
 - 1-12 STRAND FOC
 - POWER
 - SPARE

SEE SHEET IT-01 FOR DETAILS

REVISIONS				STATE OF FLORIDA DEPARTMENT OF TRANSPORTATION			TRUCK PARKING AVAILABILITY SYSTEM SUMTER COUNTY, FDOT DISTRICT 5 REST AREA 50192 (32 SPACES) SOUTHBOUND MILE MARKER 308	SHEET NO. IT-02
DATE	DESCRIPTION	DATE	DESCRIPTION	ROAD NO.	COUNTY	FINANCIAL PROJECT ID		
			FOR ILLUSTRATION PURPOSE ONLY	I-75	SUMTER	440222-1-52-01		



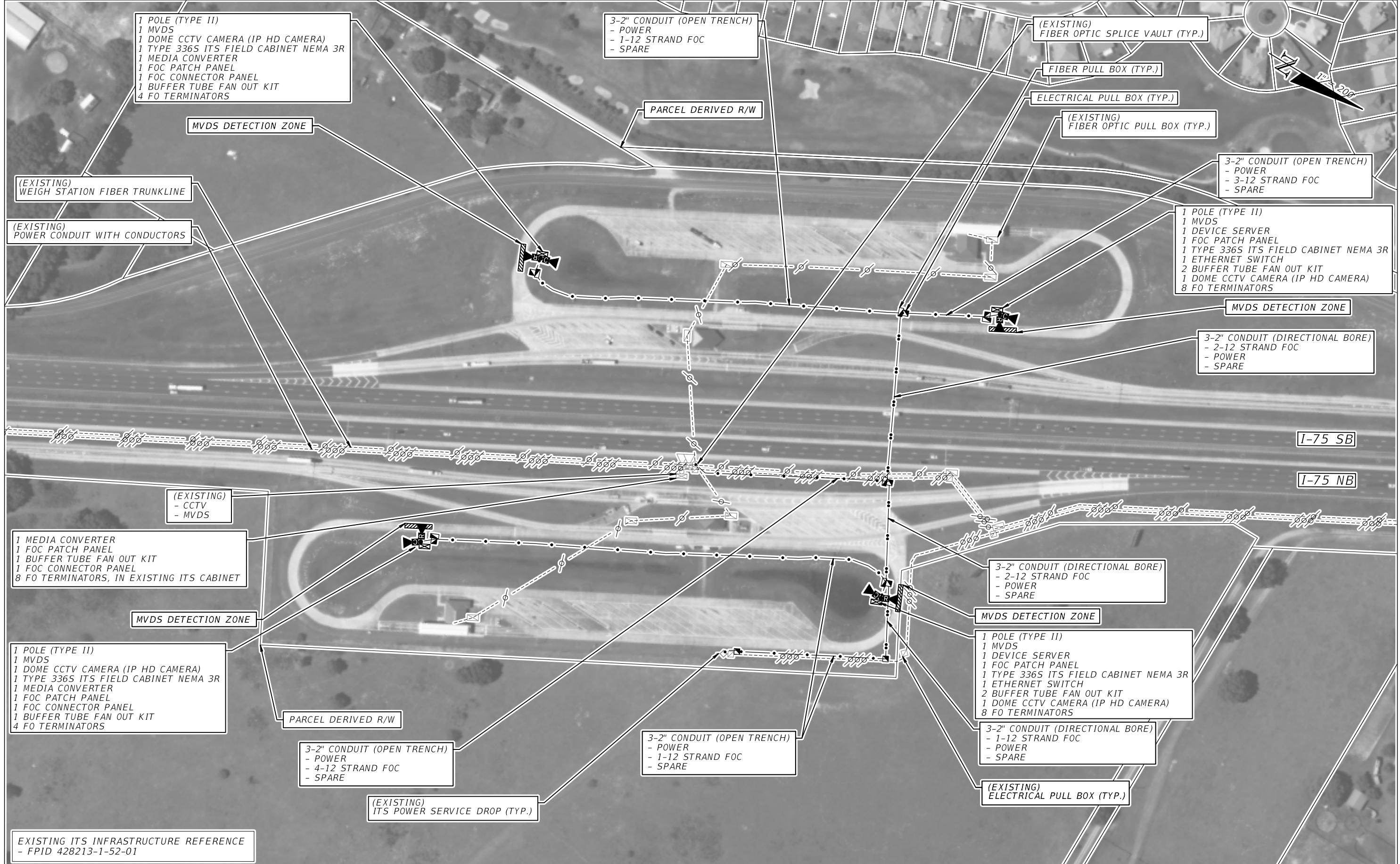
REVISIONS	
DATE	DESCRIPTION

FOR ILLUSTRATION PURPOSE ONLY

STATE OF FLORIDA DEPARTMENT OF TRANSPORTATION		
ROAD NO.	COUNTY	FINANCIAL PROJECT ID
I-75	SUMTER	440222-1-52-01

TRUCK PARKING AVAILABILITY SYSTEM
SUMTER COUNTY, FDOT DISTRICT 5
TPAS SIGN 50192
SOUTHBOUND MILE MARKER 312.20

SHEET NO.
IT-02A



1 POLE (TYPE II)
 1 MVDS
 1 DOME CCTV CAMERA (IP HD CAMERA)
 1 TYPE 336S ITS FIELD CABINET NEMA 3R
 1 MEDIA CONVERTER
 1 FOC PATCH PANEL
 1 FOC CONNECTOR PANEL
 1 BUFFER TUBE FAN OUT KIT
 4 FO TERMINATORS

3-2" CONDUIT (OPEN TRENCH)
 - POWER
 - 1-12 STRAND FOC
 - SPARE

(EXISTING)
 FIBER OPTIC SPLICE VAULT (TYP.)

FIBER PULL BOX (TYP.)

ELECTRICAL PULL BOX (TYP.)

(EXISTING)
 FIBER OPTIC PULL BOX (TYP.)

3-2" CONDUIT (OPEN TRENCH)
 - POWER
 - 3-12 STRAND FOC
 - SPARE

1 POLE (TYPE II)
 1 MVDS
 1 DEVICE SERVER
 1 FOC PATCH PANEL
 1 TYPE 336S ITS FIELD CABINET NEMA 3R
 1 ETHERNET SWITCH
 2 BUFFER TUBE FAN OUT KIT
 1 DOME CCTV CAMERA (IP HD CAMERA)
 8 FO TERMINATORS

(EXISTING)
 WEIGH STATION FIBER TRUNKLINE

(EXISTING)
 POWER CONDUIT WITH CONDUCTORS

3-2" CONDUIT (DIRECTIONAL BORE)
 - 2-12 STRAND FOC
 - POWER
 - SPARE

(EXISTING)
 - CCTV
 - MVDS

1 MEDIA CONVERTER
 1 FOC PATCH PANEL
 1 BUFFER TUBE FAN OUT KIT
 1 FOC CONNECTOR PANEL
 8 FO TERMINATORS, IN EXISTING ITS CABINET

3-2" CONDUIT (DIRECTIONAL BORE)
 - 2-12 STRAND FOC
 - POWER
 - SPARE

1 POLE (TYPE II)
 1 MVDS
 1 DOME CCTV CAMERA (IP HD CAMERA)
 1 TYPE 336S ITS FIELD CABINET NEMA 3R
 1 MEDIA CONVERTER
 1 FOC PATCH PANEL
 1 FOC CONNECTOR PANEL
 1 BUFFER TUBE FAN OUT KIT
 4 FO TERMINATORS

1 POLE (TYPE II)
 1 MVDS
 1 DEVICE SERVER
 1 FOC PATCH PANEL
 1 TYPE 336S ITS FIELD CABINET NEMA 3R
 1 ETHERNET SWITCH
 2 BUFFER TUBE FAN OUT KIT
 1 DOME CCTV CAMERA (IP HD CAMERA)
 8 FO TERMINATORS

3-2" CONDUIT (DIRECTIONAL BORE)
 - 1-12 STRAND FOC
 - POWER
 - SPARE

3-2" CONDUIT (OPEN TRENCH)
 - POWER
 - 4-12 STRAND FOC
 - SPARE

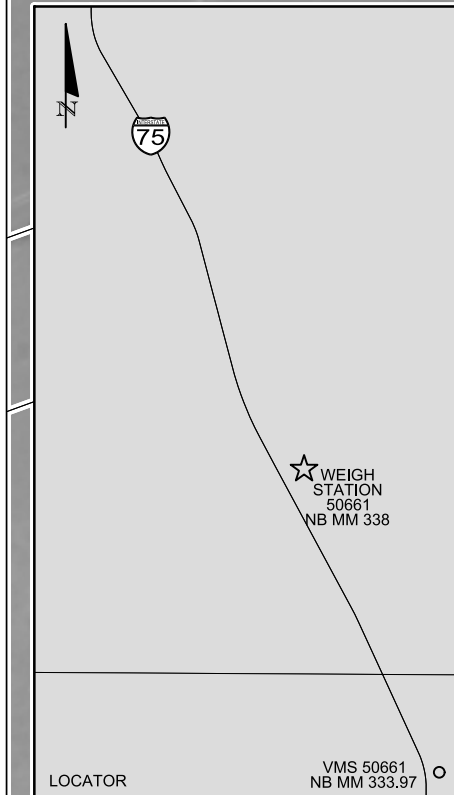
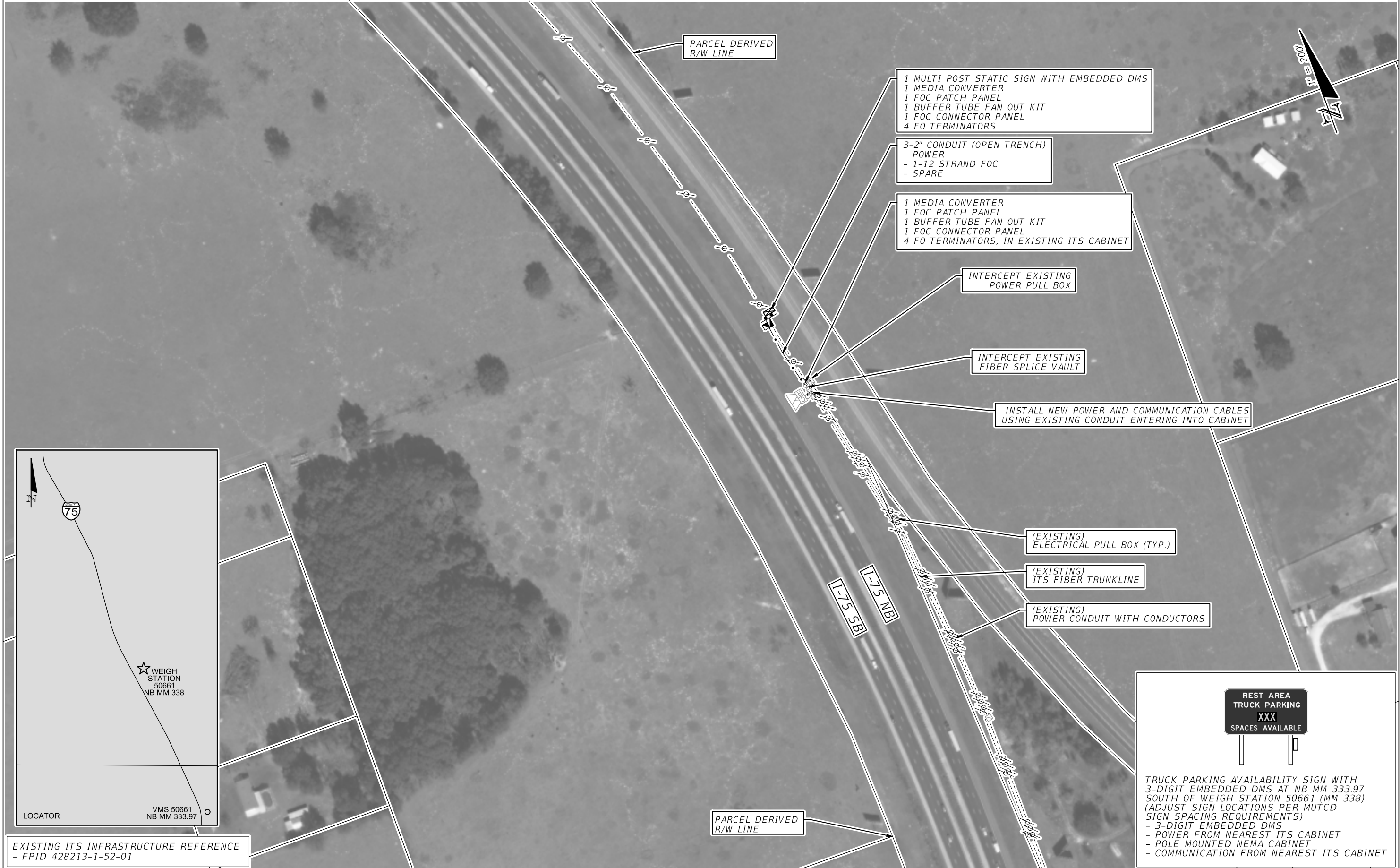
3-2" CONDUIT (OPEN TRENCH)
 - POWER
 - 1-12 STRAND FOC
 - SPARE

(EXISTING)
 ELECTRICAL PULL BOX (TYP.)

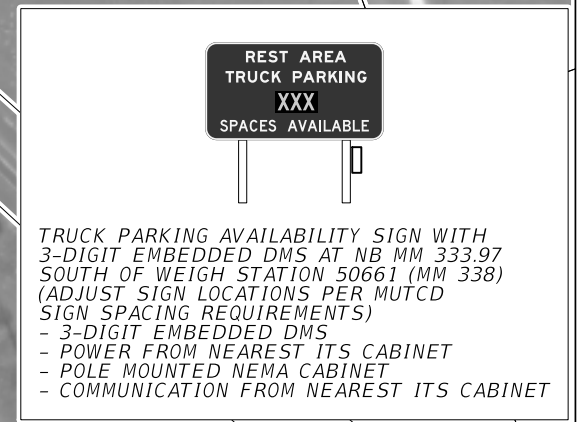
(EXISTING)
 ITS POWER SERVICE DROP (TYP.)

EXISTING ITS INFRASTRUCTURE REFERENCE
 - FPID 428213-1-52-01

REVISIONS		DESCRIPTION		STATE OF FLORIDA DEPARTMENT OF TRANSPORTATION			TRUCK PARKING AVAILABILITY SYSTEM MARION COUNTY, FDOT DISTRICT 5 WEIGH STATION 50661 (45 SPACES) NORTHBOUND MILE MARKER 338 WEIGH STATION 50662 (44 SPACES) SOUTHBOUND MILE MARKER 338	SHEET NO. IT-03
DATE	DESCRIPTION	DATE	DESCRIPTION	ROAD NO.	COUNTY	FINANCIAL PROJECT ID		
			FOR ILLUSTRATION PURPOSE ONLY	I-75	MARION	440222-1-52-01		



EXISTING ITS INFRASTRUCTURE REFERENCE
- FPID 428213-1-52-01

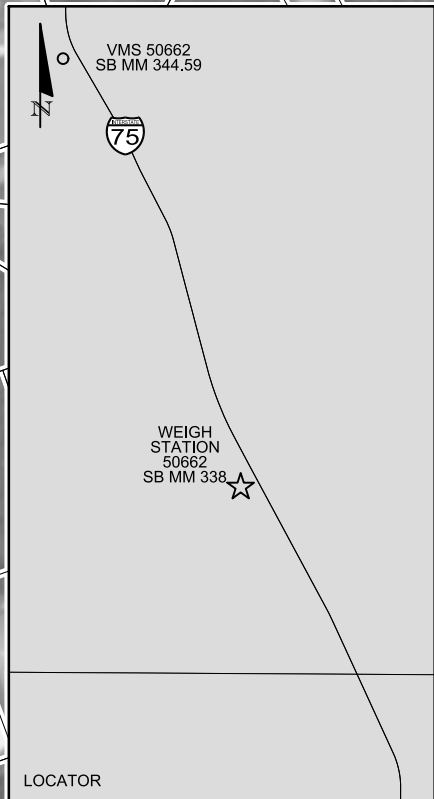
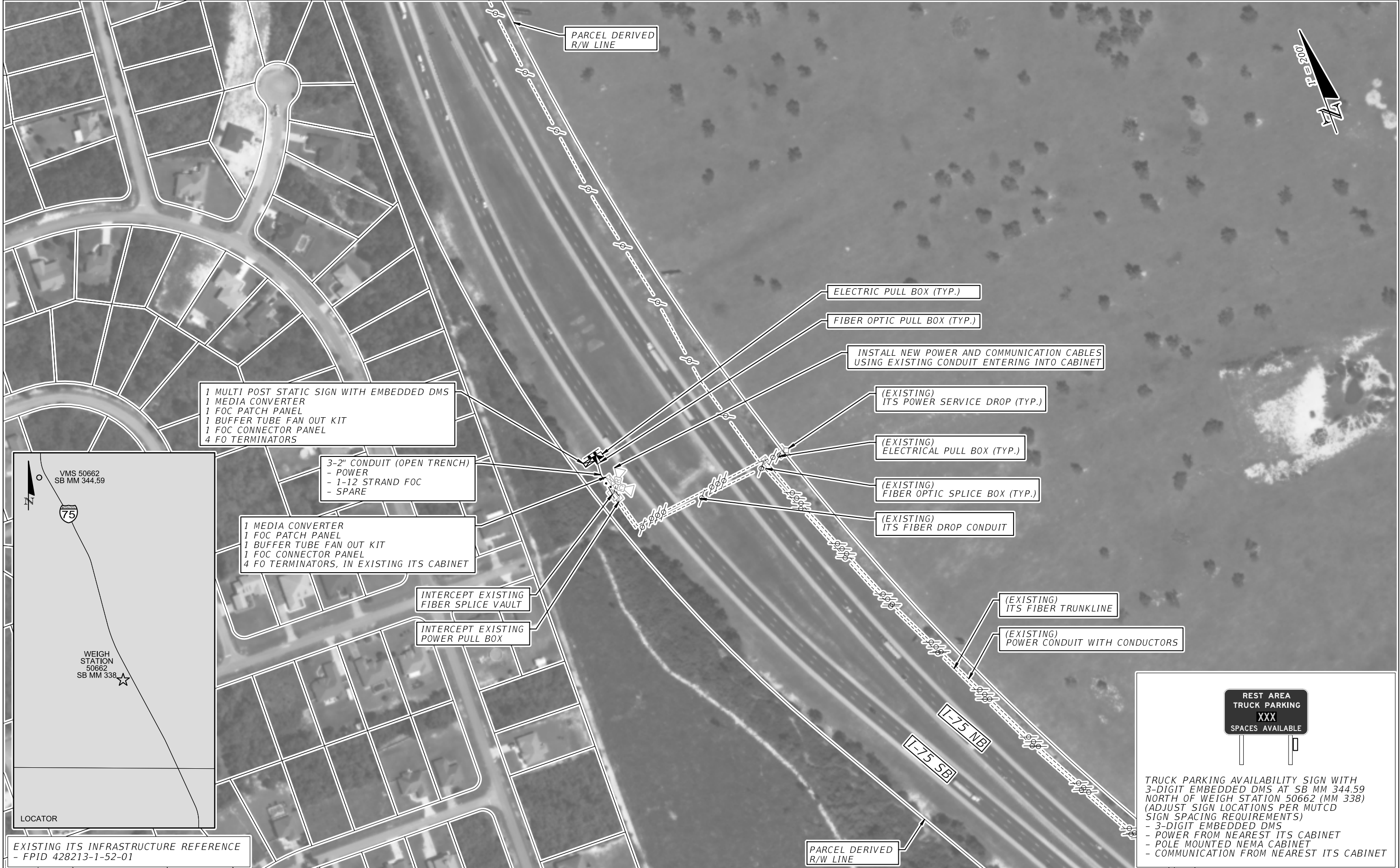


REVISIONS			
DATE	DESCRIPTION	DATE	DESCRIPTION

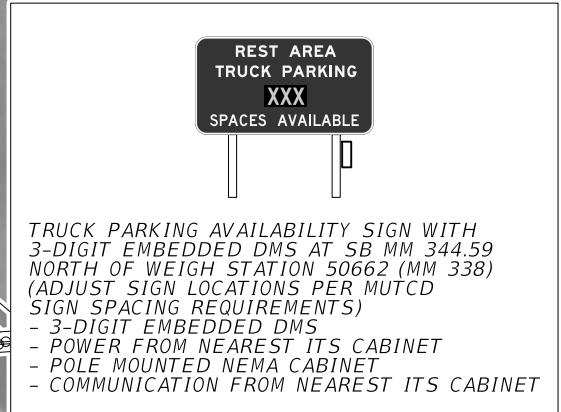
FOR ILLUSTRATION
PURPOSE ONLY

STATE OF FLORIDA DEPARTMENT OF TRANSPORTATION		
ROAD NO.	COUNTY	FINANCIAL PROJECT ID
1-75	SUMTER	440222-1-52-01

TRUCK PARKING AVAILABILITY SYSTEM SUMTER COUNTY, FDOT DISTRICT 5 TPAS SIGN 50661 NORTHBOUND MILE MARKER 333.97	SHEET NO. IT-03A
---	----------------------------



EXISTING ITS INFRASTRUCTURE REFERENCE
- FPID 428213-1-52-01



REVISIONS			
DATE	DESCRIPTION	DATE	DESCRIPTION

FOR ILLUSTRATION
PURPOSE ONLY

STATE OF FLORIDA DEPARTMENT OF TRANSPORTATION		
ROAD NO.	COUNTY	FINANCIAL PROJECT ID
I-75	MARION	440222-1-52-01

TRUCK PARKING AVAILABILITY SYSTEM
MARION COUNTY, FDOT DISTRICT 5
TPAS SIGN 50662
SOUTHBOUND MILE MARKER 344.59

SHEET
NO.

IT-03B

(EXISTING)
ITS FIBER TRUNKLINE

(EXISTING)
POWER CONDUIT WITH CONDUCTORS

I-75 SB

I-75 NB

3-2" CONDUIT (OPEN TRENCH)
- POWER
- 1-12 STRAND FOC
- SPARE

SEE SHEET IT-05 FOR DETAILS



(EXISTING)
FIBER OPTIC PULL BOX

INTERCEPT EXISTING
FIBER SPLICE VAULT

2-2" CONDUIT (DIRECTIONAL BORE)
- 1-12 STRAND FOC
- SPARE

(EXISTING)
ELECTRICAL PULL BOX (TYP.)

INSTALL NEW COMMUNICATION
CABLE USING EXISTING CONDUIT
ENTERING INTO EXISTING CABINET

1 DOME CCTV CAMERA (IP HD CAMERA)
1 ACCESS POINT
1 REPEATER
1 TYPE 336S ITS FIELD CABINET NEMA 3R
1 POLE
1 MEDIA CONVERTER
1 ETHERNET SWITCH
1 FOC PATCH PANEL
1 BUFFER TUBE FAN OUT KIT
1 FOC CONNECTOR PANEL
8 FO TERMINATIONS

1 MEDIA CONVERTER
1 FOC PATCH PANEL
1 BUFFER TUBE FAN OUT KIT
1 FOC CONNECTOR PANEL
4 FO TERMINATIONS, IN EXISTING ITS CABINET

EACH TRUCK PARKING STALL
WILL HAVE AN ARRAY OF
IN-GROUND SENSORS (TYP.)

1 REPEATER (TYP.)
1 TYPE II POLE (TYP.)
FOR TRANSMISSION OF MESSAGES
FROM THE GROUND SENSORS
TO THE ACCESS POINT

1 DOME CCTV CAMERA (IP HD CAMERA)
1 ACCESS POINT
1 REPEATER
1 TYPE 336S ITS FIELD CABINET NEMA 3R
1 POLE
1 MEDIA CONVERTER
1 ETHERNET SWITCH
1 FOC PATCH PANEL
1 BUFFER TUBE FAN OUT KIT
1 FOC CONNECTOR PANEL
4 FO TERMINATIONS

3-2" CONDUIT (DIRECTIONAL BORE)
- 1-12 STRAND FOC
- POWER
- SPARE

120/240 VAC SINGLE PHASE POWER
SUPPLIED FROM THE BUILDING
BREAKER PANEL

PARCEL DERIVED R/W

3-2" CONDUIT (OPEN TRENCH)
- POWER
- 1-12 STRAND FOC
- SPARE

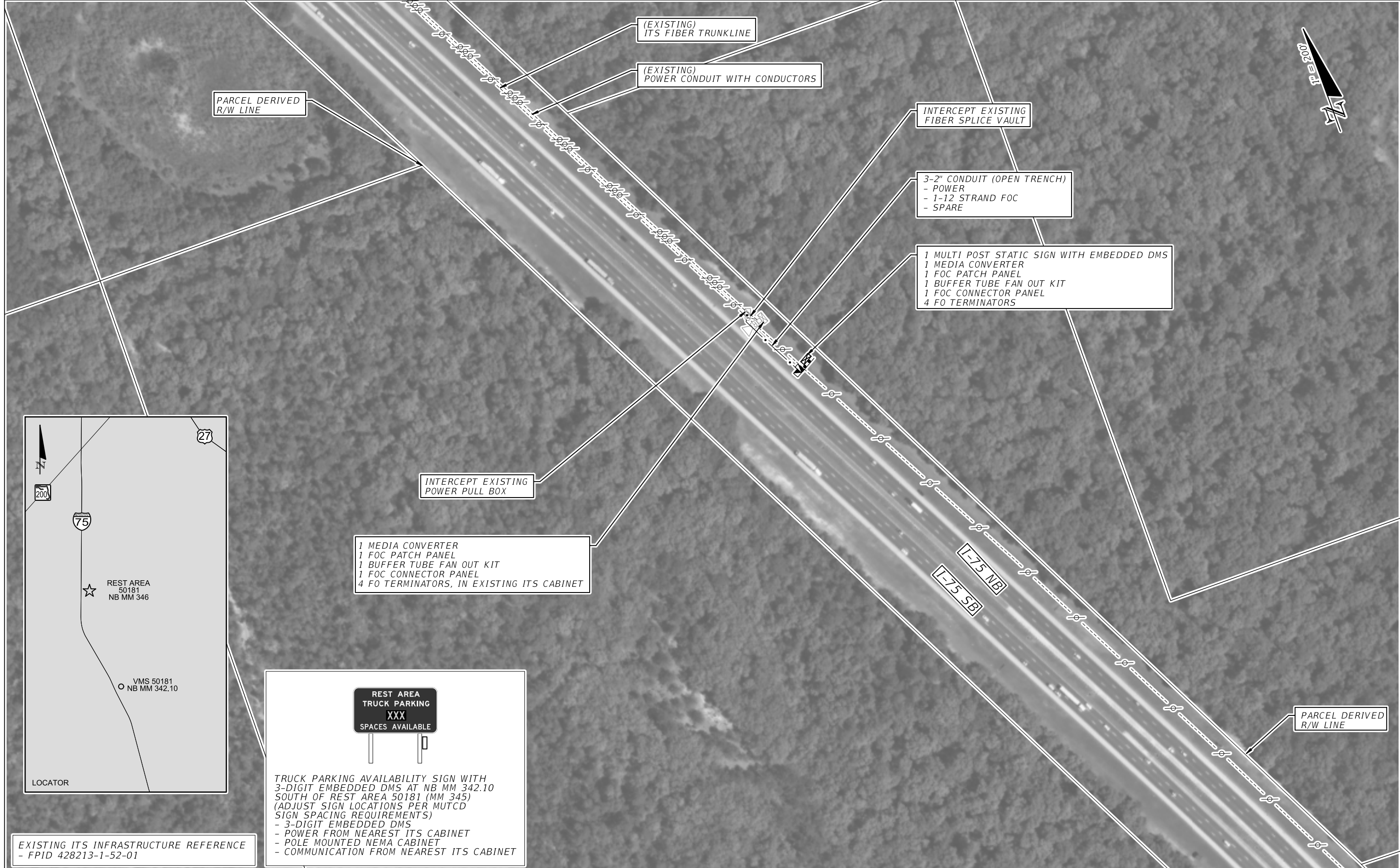
EXISTING ITS INFRASTRUCTURE REFERENCE
- FPID 428213-1-52-01

REVISIONS			
DATE	DESCRIPTION	DATE	DESCRIPTION
FOR ILLUSTRATION PURPOSE ONLY			

STATE OF FLORIDA DEPARTMENT OF TRANSPORTATION		
ROAD NO.	COUNTY	FINANCIAL PROJECT ID
I-75	MARION	440222-1-52-01

TRUCK PARKING AVAILABILITY SYSTEM
MARION COUNTY, FDOT DISTRICT 5
REST AREA 50181 (45 SPACES)
NORTHBOUND MILE MARKER 345

SHEET NO.
IT-04



REVISIONS			
DATE	DESCRIPTION	DATE	DESCRIPTION

FOR ILLUSTRATION PURPOSE ONLY

STATE OF FLORIDA DEPARTMENT OF TRANSPORTATION		
ROAD NO.	COUNTY	FINANCIAL PROJECT ID
I-75	MARION	440222-1-52-01

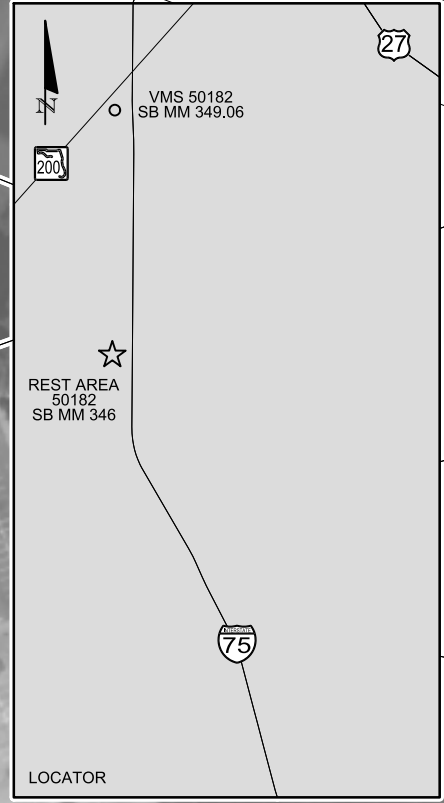
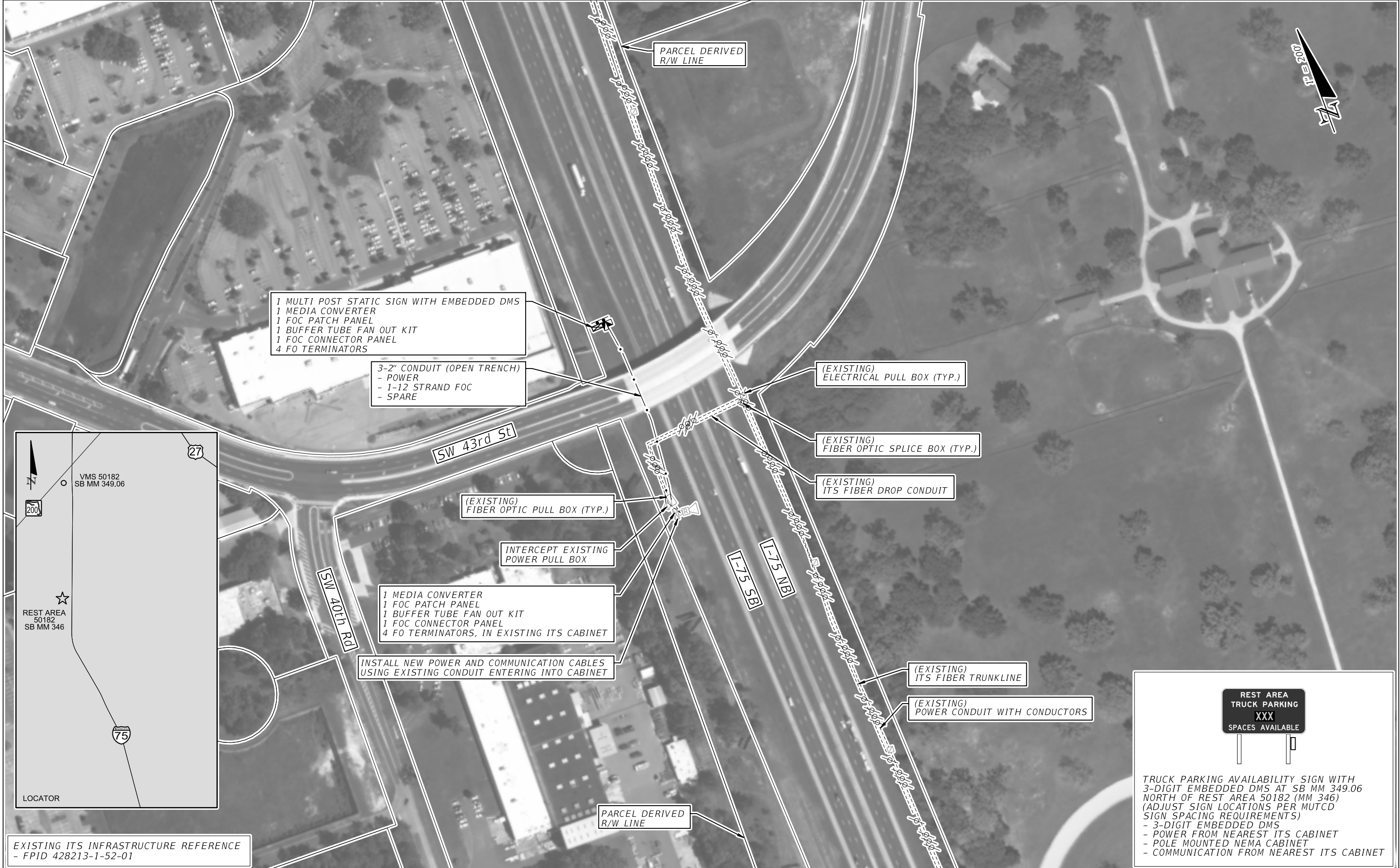
TRUCK PARKING AVAILABILITY SYSTEM
MARION COUNTY, FDOT DISTRICT 5
TPAS SIGN 50181
NORTHBOUND MILE MARKER 342.10

SHEET NO.
IT-04A



REVISIONS				STATE OF FLORIDA DEPARTMENT OF TRANSPORTATION			TRUCK PARKING AVAILABILITY SYSTEM MARION COUNTY, FDOT DISTRICT 5 REST AREA 50182 (44 SPACES) SOUTHBOUND MILE MARKER 346	SHEET NO. IT-05
DATE	DESCRIPTION	DATE	DESCRIPTION	ROAD NO.	COUNTY	FINANCIAL PROJECT ID		
				I-75	MARION	440222-1-52-01		

FOR ILLUSTRATION
PURPOSE ONLY



EXISTING ITS INFRASTRUCTURE REFERENCE
- FPID 428213-1-52-01

**REST AREA
TRUCK PARKING
XXX
SPACES AVAILABLE**

TRUCK PARKING AVAILABILITY SIGN WITH
3-DIGIT EMBEDDED DMS AT SB MM 349.06
NORTH OF REST AREA 50182 (MM 346)
(ADJUST SIGN LOCATIONS PER MUTCD
SIGN SPACING REQUIREMENTS)
- 3-DIGIT EMBEDDED DMS
- POWER FROM NEAREST ITS CABINET
- POLE MOUNTED NEMA CABINET
- COMMUNICATION FROM NEAREST ITS CABINET

REVISIONS				STATE OF FLORIDA DEPARTMENT OF TRANSPORTATION			TRUCK PARKING AVAILABILITY SYSTEM MARION COUNTY, FDOT DISTRICT 5 TPAS SIGN 50182 SOUTHBOUND MILE MARKER 349.06		SHEET NO.
DATE	DESCRIPTION	DATE	DESCRIPTION	ROAD NO.	COUNTY	FINANCIAL PROJECT ID			
				I-75	MARION	440222-1-52-01			IT-05A
FOR ILLUSTRATION PURPOSE ONLY									